



Remote Manual

CAUTION

INSTRUCTIONS OF USING WIRELESS REMOTE CONTROL

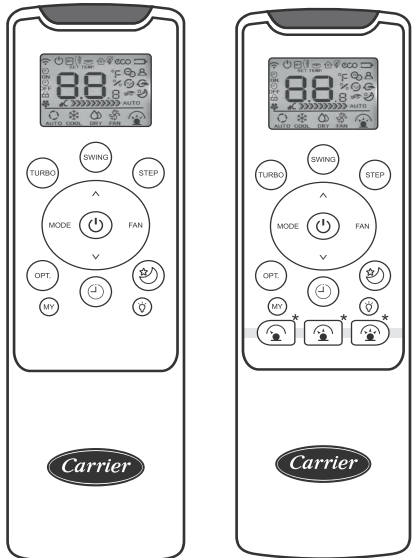
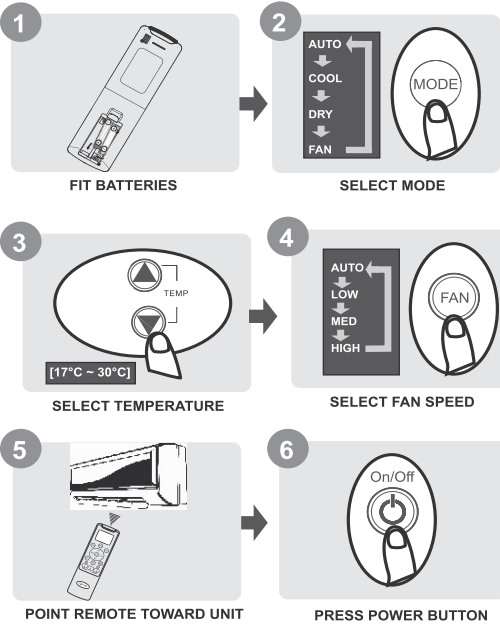
- The remote control uses two alkaline batteries (1.5 Volts).
- Do not use old batteries or batteries of different types, as this may cause the controller malfunction.
- If you do not use the remote control for more than two months, please remove the batteries. Other wise battery leakage may damage the remote control.
- The average battery life during normal use is approximately half a year. Replace the batteries when there is no receiving beep coming from the indoor unit or transmission indicator ▲ on the remote control fails to light.
- The maximum operating distance for the remote control is approximately 8 meters.
- The transmitter of remote control must be directed toward the receiver of indoor unit when pressing the buttons of the desired functions. An acoustical acknowledgement sound (beep) will indicate that signal has been received.
- Avoid obstacles obstructions such as curtains, doors or other materials between the remote control and the receiver of indoor unit to avoid blocking the signals from the remote control to the indoor unit.
- Avoid direct sunlight on the receiver of indoor unit, which may interfere with good signal reception and the air conditioner may not work properly. Draw the curtains to avoid direct sunlight.
- Keep the remote control away from water. Do not let the remote control fall down.
- Never use objects with sharp point to press the button on the remote control.
- Prevent any liquid from falling into the remote control.
- If other electric applications react to the remote control, move these applications.
- Do not dispose of batteries as un stored municipal waste. Refer to local laws for proper disposal of batteries.



Correct Disposal of Battery

- This marking printed in the batteries attached to your Air Conditioning product is information for end-uses according to the EU directive 2013/56/EU article 20 annex II.
- Batteries, at their end-of-life, should be disposed of separately from general household waste. Please, dispose of batteries correctly at your local community waste collection or the recycling center.

1. QUICK START

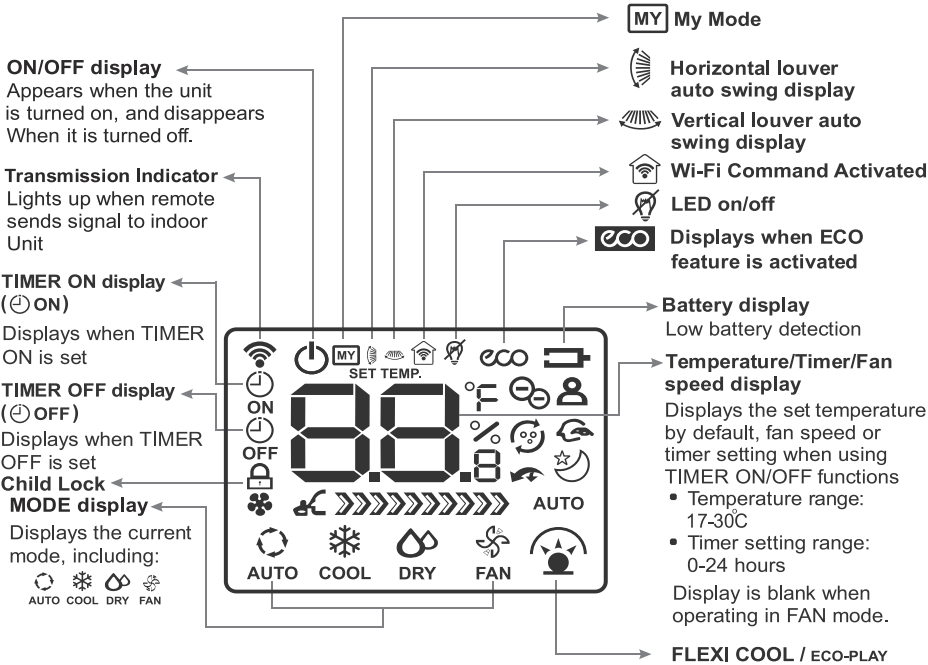


* Optional Functions:
FLEXI COOL / Eco Play Buttons are optional Functions and are available in Selected air conditioner only.

2. DISPLAY & BUTTONS

2.1 Display

Information are displayed when the remote controller is powered up.



PLASMA

Follow me feature display

Displays when select Self clean feature by OPT button

Not available for this unit

Sleep mode display

Model Dependent and is available in selected models only.

Fan speed display

Displays selected fan speed:

LOW
MED
HIGH
AUTO

AUTO

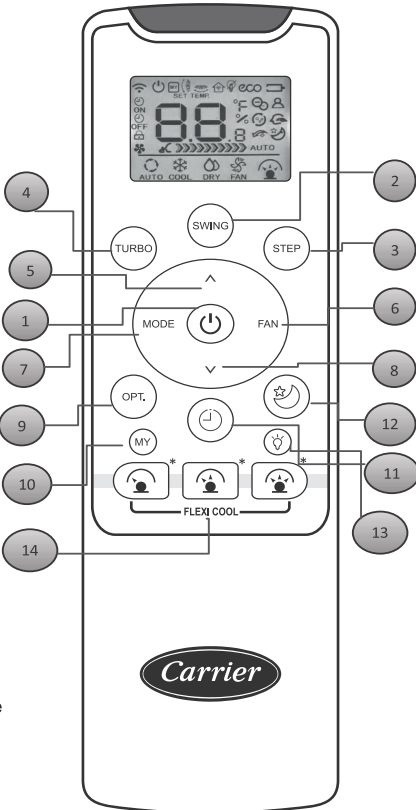
This fan speed can not be adjusted in AUTO or DRY mode.

Note:

All indicators shown in the above figure are for the purpose of clear presentation. But during the actual operation only the relative functional signs are shown on the display window.

2.2 Buttons

- ON/OFF**
Press to start operation.
Press again to stop.
- SWING**
Press to swing the louver.
- STEP**
Press to set the louver position.
- TURBO**
Press to activate the TURBO or Super Turbo function. (Model dependent)
- TEMPERATURE UP**
Increases temperature in 1°C increments.
Max. Temp. is 30°C.
- FAN SPEED**
Press to select fan speed in sequence low, medium, high & auto.
- MODE**
Press the mode button to switch the mode In turn.
- TEMPERATURE DOWN**
Decreases temperature in 1°C decrements.
Min. Temp. is 17°C.
- OPT (OPTIONS)**
Press this button to select the air conditioner Function in a sequence of following:
→ Follow me → ECO → Self - clean → Plasma
← Exit ←



Press the **OPT** Button to select the desired function, the Selected symbol will display on your remote screen for 2 sec. If within 2 sec, again not pressed the same OPT key, then The function will be locked.

- MY (MY MODE)**
Press to memorize or resume your favorite pre-settings.
- TIMER**
Press to set either On Timer or Off Timer at a time.
- SLEEP**
Press to enter Sleep Mode.
- LED/KW***
Press to turn on/off the LED display and to display the instant KW value.
- FLEXI COOL / ECO PLAY**
Press below available options to enter the desired energy Efficient mode :
A) Press this button to enter 50% electrical energy consumption mode.
B) Press this button to enter 75% electrical energy consumption mode.
C) Press this button to enter 100% electrical energy consumption mode.

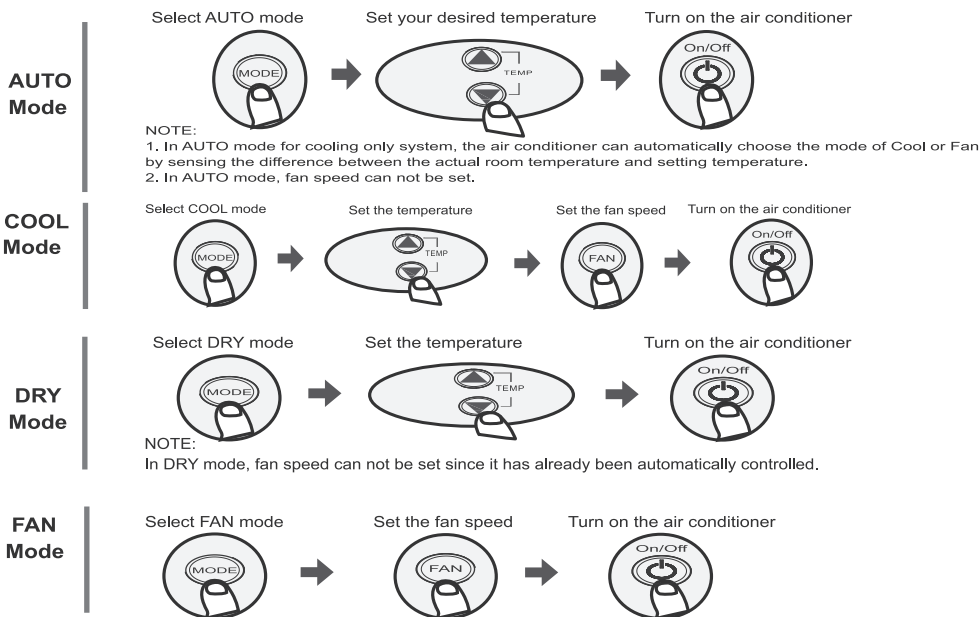
NOTE:

- Above illustration shows all the features of Remote . For actual model, Fewfeatures and Remote buttons may not be available.
- Buttons design might be slightly different from the actual one.
- For each function activation and deactivation, please refer to the detailed Description available from next page onwards.
- FLEXI COOL / ECO PLAY function is optional feature and is available in selected Inverter Air Conditioner only. If your Air Conditioner doesn't have this function then your remote controller will not have this function.
- * is applicable for selected Models only.

3. HOW TO USE BASIC FUNCTIONS

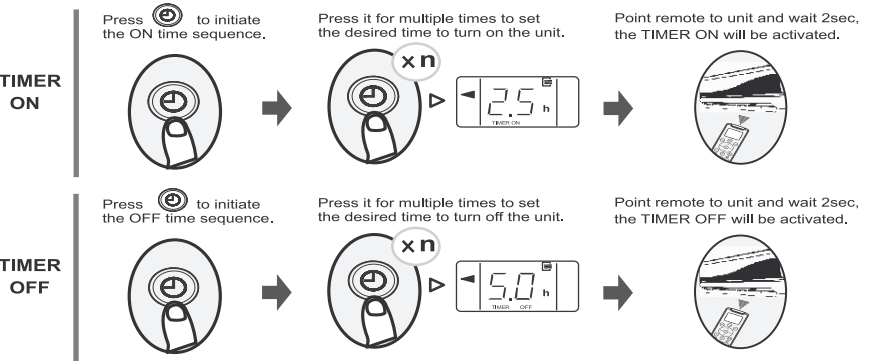
3.1 Basic Operations

! ATTENTION Before operation, please ensure the unit is plugged in and power is available.



3.2 Timer Functions

TIMER ON/OFF - Set the time after which the unit will automatically turn on/off.



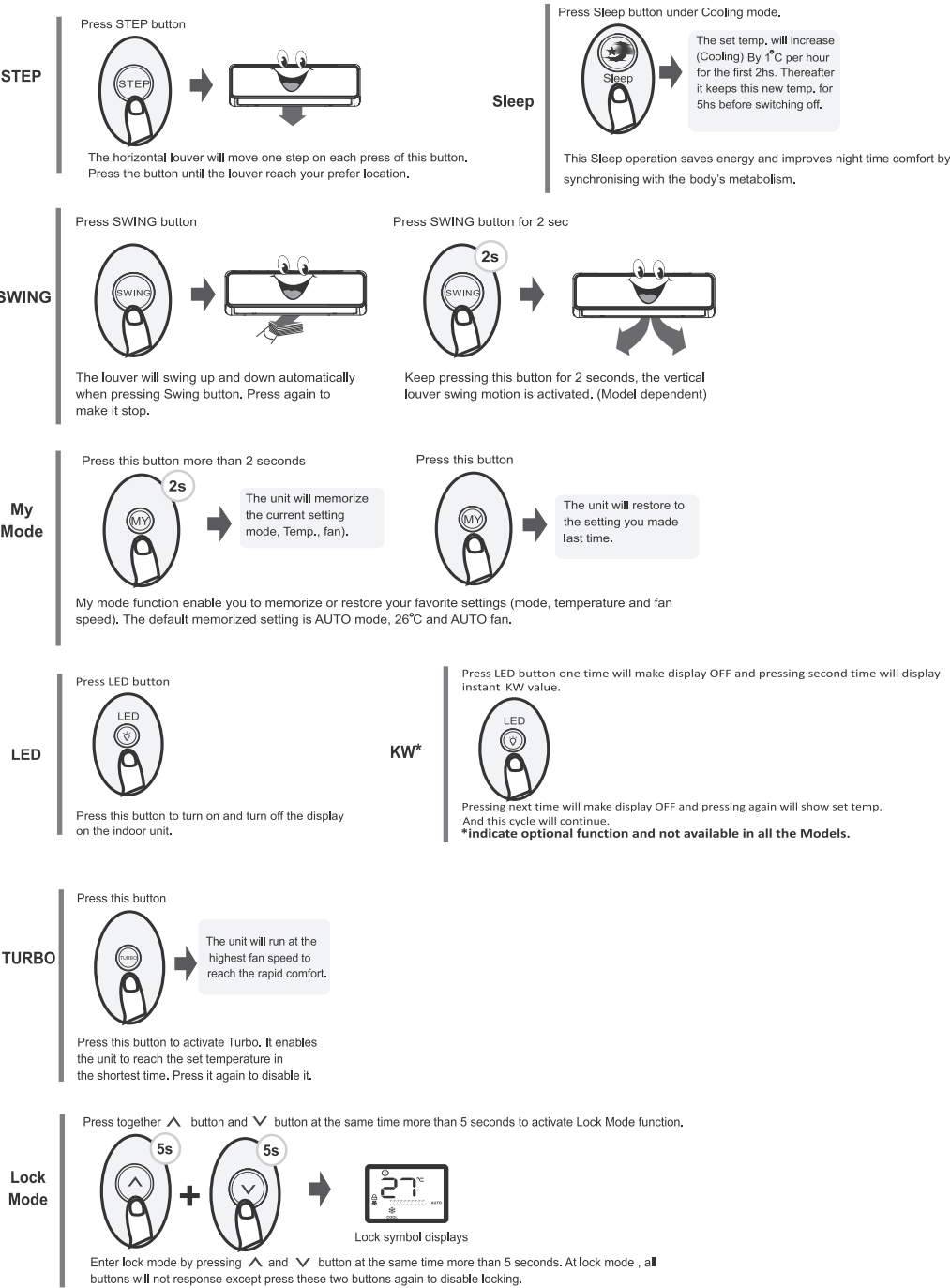
NOTE:

1. When setting the TIMER ON or TIMER OFF, the time will increase by 30 minutes increments with each press, up to 10 hours. After 10 hours and up to 24, it will increase in 1 hour increments. (For example, press 5 times to get 2.5h, and press 21 times to get 11h.) The timer will revert to 0,0 after 24.

2. Cancel either function by setting its timer to 0.0h.

3. Both On and Off Timer can not be set at the same time. i.e., If the Air Conditioner is running, then Timer Off function can be set and If the Air Conditioner is Off, then Timer On function can be set.

4. HOW TO USE ADVANCED FUNCTIONS



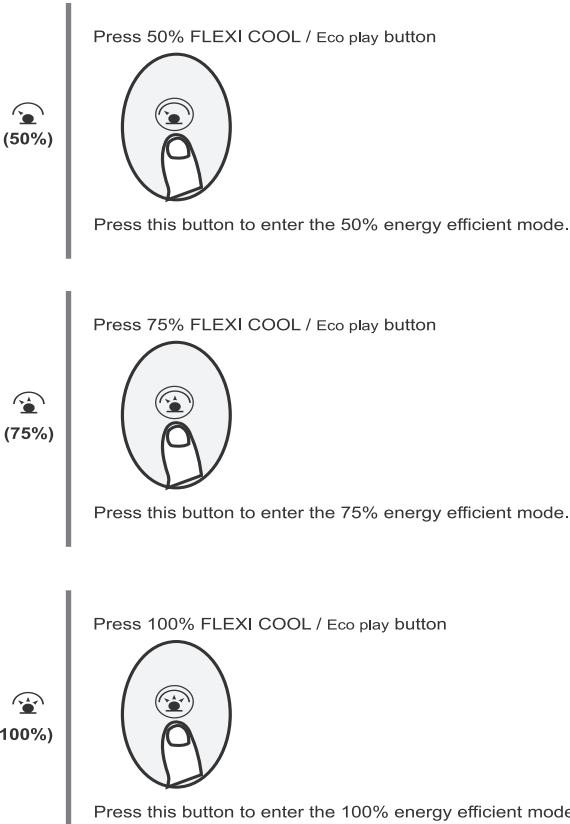
5. FLEXI COOL / ECO PLAY FUNCTION

In FLEXI COOL / Eco Play function, we have three options as given below :

A) Press this button to enter 50% electrical energy consumption mode.

B) Press this button to enter 75% electrical energy consumption mode.

C) Press this button to enter 100% electrical energy consumption mode.



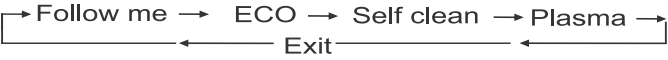
NOTE:

- This function is only available under COOL mode.
- To cancel the FLEXI COOL / Eco play function, turn off the unit Or activate ECO, Sleep, Turbo or Self clean
- Pressing the same FLEXI COOL / Eco play button will not cancel This function.
- If you feel uncomfortable during this function, then Cancel this function as described above in note 2.

6. OPT (OPTIONAL) FUNCTIONS

Options(OPT) Button

Press this button to select the air conditioner Functions in a sequence of below followings :



Press the **OPT** button to select the desired Function, the selected symbol will appear On the display area, if next option is not selected Within 2 secs, then the selected function will be Activated.

OPT. FOLLOW ME (人)

Press OPT button(One time) under COOL operating Mode



The controller will display the actual temp. at its location and send this signal to indoor unit every 3 minutes

Press this button to activate Follow me. This function can adjust room temperature base on the controller's sensor and make you comfort. Note:Please put the controller in the location where can ensure the indoor unit can receive the signal.

OPT. ECO *(ECO)

Press OPT button(Two time) under COOL operating Mode



air conditioner will automatically operate at 24°C(75°F), with auto fan speed.

Press this button to enter energy efficient mode.

- Modifying operating the mode or adjusting the set temperature to less than 24°C(75°F) will stop ECO operation.
- The ECO operation will be stopped automatically after 8 hours. Under ECO operation, the set temperature should be 24°C(75°F) or more, it may result in insufficient cooling. If you feel uncomfortable, just cancel the ECO button as mentioned above.

(*indicate optional functions)

OPT. Self Clean (🌀)

Press OPT. Button (3 times) under COOL or DRY Mode.



The unit will enter low fan mode to dry up the coil. The cleaning cycle takes 15~30 mins, after which the unit will turn off automatically.

Under SELF CLEAN mode, the air conditioner will automatically clean and dry the Evaporator and keep it as fresh for the next operation. It is not available under heating or fan mode.

Note:-once it is activated then you have to press the OPT, button 5 times i.e, again select the self clean function again to cancel this function of else press ON/OFF button to cancel this function.

OPT. Plasma *(🌀)

Press OPT button(Four time) to select this function.



The ionizer or Plasma Dust collector (Model dependent) is energized.

When the FRESH function is initiated, the Ionizer/Plasma Dust Collector(depending on models) is energized and will help to remove pollen and impurities from the air.

(* Indicate optional functions)

NOTE:

- Buttons design is based on typical model and might be slightly different from the actual one you purchased, the actual shape shall prevail.
- All the functions described are accomplished by the unit. If the unit has no this feature, there is no corresponding operation happened when press the relative button on the remote controller.
- When there are wide differences between "Remote controller Illustration" and "USER'S MANUAL" on function description, the description of "USER'S MANUAL" shall prevail.

7. COMPRESSOR FREQUENCY SETTING INSTRUCTION

For inverter Models

Capacity Rating	Step 1	Step 2	Step 3	Step 4
	Select set Temperature	Select Mode	Press Turbo button	Test mode Activate by
100%	17	Cool, High Fan Speed & Compressor Running	Press Turbo button more than or equal to 6 times frequently within 10 seconds (Beep sound will be heard every time while pressing turbo button).	Display will show C1 (Fan Speed will automatically change to turbo).
50%	19	Cool, High Fan Speed & Compressor Running	Press Turbo button more than or equal to 6 times frequently within 10 seconds (Beep sound will be heard every time while pressing turbo button).	Display will show C2 (Fan Speed will automatically change to turbo).

*The design and specifications are subject to change without prior notice for product improvement. Consult with the sales agency or manufacturer for details.