



Remote Manual

The design and specifications are subject to change without prior notice for product improvement. Consult with the sales agency or manufacturer for details.

2020C1033330@CMI

CONTENTS

1. QUICK START	3
2. DISPLAY AND BUTTONS	4
• 2.1 Display	4
• 2.2 Buttons	5
3. HOW TO USE BASIC FUNCTIONS	7
• 3.1 Basic Operation	7
• 3.2 Timer Function	8
4. HOW TO USE ADVANCED FUNCTIONS	9
5. OPT (OPTIONAL) FUNCTIONS	11
6. COMPRESSOR FREQUENCY SETTING INSTRUCTION ...	13



INSTRUCTIONS OF USING WIRELESS REMOTE CONTROL

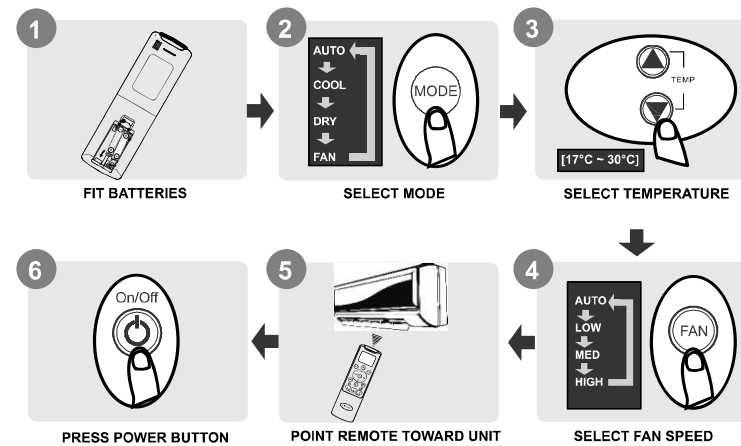
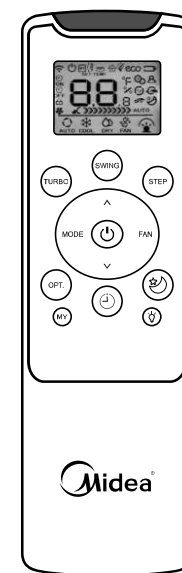
- The remote control uses two alkaline batteries (1.5 Volts).
- Do not use old batteries or batteries of different types, as this may cause the controller malfunction.
- If you do not use the remote control for more than two months, please remove the batteries. Other wise battery leakage may damage the remote control.
- The average battery life during normal use is approximately half a year. Replace the batteries when there is no receiving beep coming from the indoor unit or transmission indicator ▲ on the remote control fails to light.
- The maximum operating distance for the remote control is approximately 8 meters.
- The transmitter of remote control must be directed toward the receiver of indoor unit when pressing the buttons of the desired functions. An acoustical acknowledgement sound (beep) will indicate that signal has been received.
- Avoid obstacles obstructions such as curtains, doors or other materials between the remote control and the receiver of indoor unit to avoid blocking the signals from the remote control to the indoor unit.
- Avoid direct sunlight on the receiver of indoor unit, which may interfere with good signal reception and the air conditioner may not work properly. Draw the curtains to avoid direct sunlight.
- Keep the remote control away from water. Do not let the remote control fall down.
- Never use objects with sharp point to press the button on the remote control.
- Prevent any liquid from falling into the remote control.
- If other electric applications react to the remote control, move these applications.
- Do not dispose of batteries as un stored municipal waste. Refer to local laws for proper disposal of batteries.



Correct Disposal of Battery

- This marking printed in the batteries attached to your Air Conditioning product is information for end-users according to the EU directive 2013/56/EU article 20 annex II.
- Batteries, at their end-of-life, should be disposed of separately from general household waste. Please, dispose of batteries correctly at your local community waste collection or the recycling center.

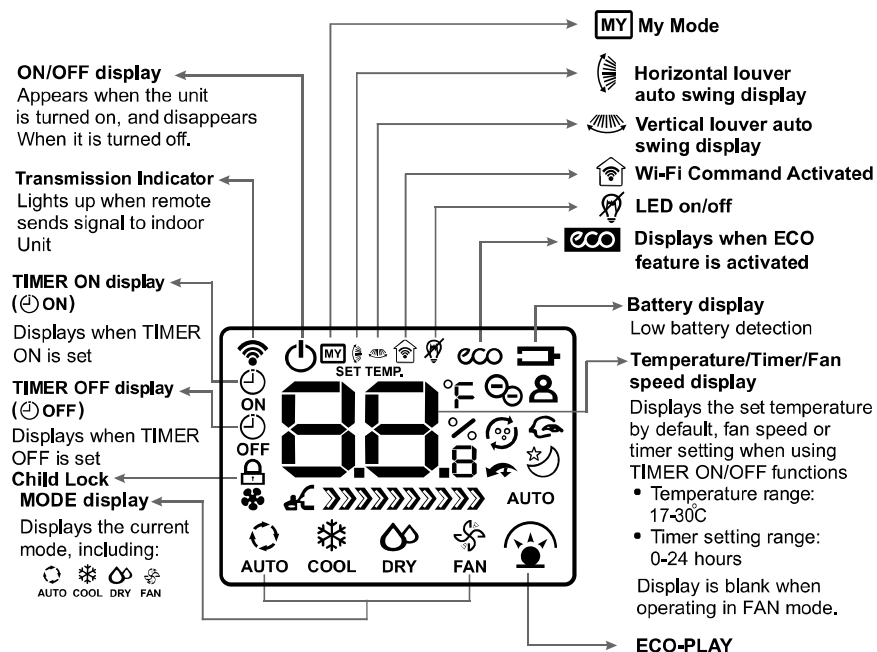
1. QUICK START



2. DISPLAY & BUTTONS

2.1 Display

Information are displayed when the remote controller is powered up.



PLASMA

Not available for this unit

Follow me feature display

Sleep mode display

Displays when select Self clean feature by OPT button

Model Dependent and is available in selected models only.

Fan speed display

Displays selected fan speed:

LOW
 MED
 HIGH
 AUTO

 AUTO

This fan speed can not be adjusted in AUTO or DRY mode.

Note:

All indicators shown in the above figure are for the purpose of clear presentation. But during the actual operation only the relative functional signs are shown on the display window.

6. COMPRESSOR FREQUENCY SETTING INSTRUCTION

For Star inverter Models

Capacity Rating	Step 1	Step 2	Step 3	Step 4
	Select set Temperature	Select Mode	Press Turbo button	Test mode Activate by
100%	17	Cool, High Fan Speed & Compressor Running	Press Turbo button more than or equal to 6 times frequently within 10 seconds (Beep sound will be heard every time while pressing turbo button).	Display will show C1 (Fan Speed will automatically change to turbo).
50%	19	Cool, High Fan Speed & Compressor Running	Press Turbo button more than or equal to 6 times frequently within 10 seconds (Beep sound will be heard every time while pressing turbo button).	Display will show C2 (Fan Speed will automatically change to turbo).

The unit will enter low fan mode to dry up the coil. The cleaning cycle takes 15~30 mins, after which the unit will turn off automatically.

Note:- once it is activated then you have to press the OPT, button 5 times i.e, again select the self clean function again to cancel this function of else press ON/OFF button to cancel this function.

OPT.
Plasma
*($\ominus\ominus$)

NOTE:

- Buttons design is based on typical model and might be slightly different from the actual one you purchased. the actual shape shall prevail.
- All the functions described are accomplished by the unit. If the unit has no this feature, there is no corresponding operation happened when press the relative button on the remote controller.
- When there are wide differences between "Remote controller Illustration" and "USER'S MANUAL" on function description, the description of "USER'S MANUAL" shall prevail.

1. **ON/OFF**
Press to start operation.
Press again to stop.
2. **SWING**
Press to swing the louver.
3. **STEP**
Press to set the louver position.
4. *** TURBO**
Press to activate the TURBO or
Super Turbo function. (Model dependent)
(* indicate optional functions)
5. **TEMPERATURE UP**
Increases temperature in 1°C increments.
Max. Temp. is 30°C.
6. **FAN SPEED**
Press to select fan speed in sequence
low, medium, high & auto.
7. **MODE**
Press the mode button to switch the mode
In turn.
8. **TEMPERATURE DOWN**
Decreases temperature in 1°C decrements.
Min. Temp. is 17°C.
9. **OPT (OPTIONS)**

→ Follow me → ECO → Self - clean → Plasma

The diagram shows a Midea remote control with the following numbered callouts:

- 1: MODE button
- 2: SWING button
- 3: STEP button
- 4: TURBO button
- 5: Button above TURBO
- 6: FAN button
- 7: Button above FAN
- 8: Button with fan icon
- 9: OPT. button
- 10: MY button
- 11: Button with light bulb icon
- 12: Button with moon icon
- 13: Button with clock icon

10. MY (MY MODE)

Press to memorize or resume
your favorite pre-settings.

11. TIMER

Press to set either On Timer or Off Timer at a time.

12. SLEEP

Press to enter Sleep Mode.

13. LED

Press to turn on/off the LED display.

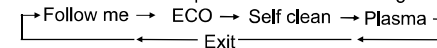
NOTE:

1. Above illustration shows all the features of Remote . For actual model, Few features and Remote buttons may not be available.
2. Buttons design might be slightly different from the actual one.
3. For each function activation and deactivation, please refer to the detailed Description available from next page onwards.

5. OPT (OPTIONAL) FUNCTIONS

Options(OPT) Button

Press this button to select the air conditioner
Functions in a sequence of below followings :



Press the **OPT** button to select the desired
Function, the selected symbol will appear
On the display area, if next option is not selected
Within 2 secs, then the selected function will be
Activated.

**OPT.
FOLLOW ME
(人)**

Press OPT button(One time) under COOL operating Mode



The controller will display
the actual temp. at its
location and send this
signal to indoor unit
every 3 minutes

Press this button to activate Follow me. This function
can adjust room temperature base on the controller's
sensor and make you comfort.

Note: Please put the controller in the location where
can ensure the indoor unit can receive the signal.

**OPT.
ECO
*(ECO)**

Press OPT button(Two time) under COOL operating Mode

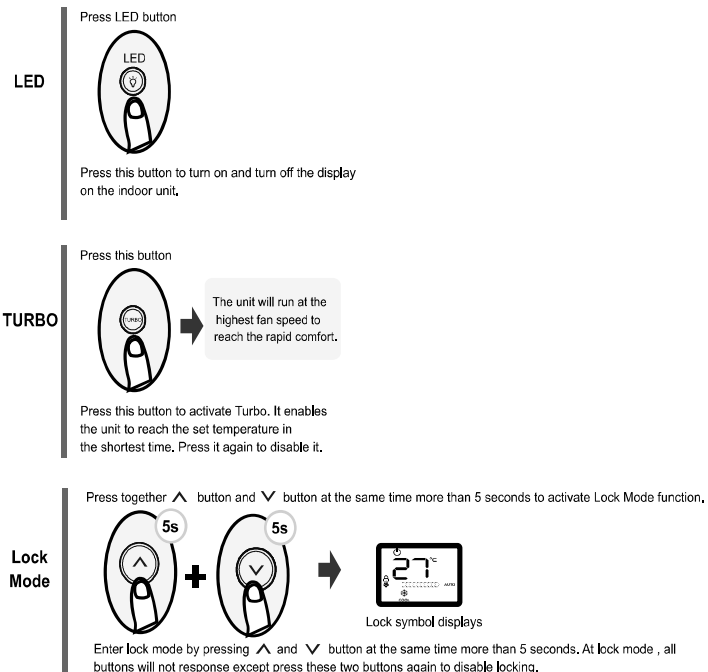


air conditioner will automatically operate at
24°C(75°F), with auto fan speed.

Press this button to enter energy efficient mode.

- Modifying operating the mode or adjusting
the set temperature to less than 24°C(75°F)
will stop ECO operation.
- The ECO operation will be stopped automatically
after 8 hours. Under ECO operation, the set
temperature should be 24°C(75°F) or more,
it may result in insufficient cooling. If you feel
uncomfortable, just cancel the ECO button
as mentioned above.

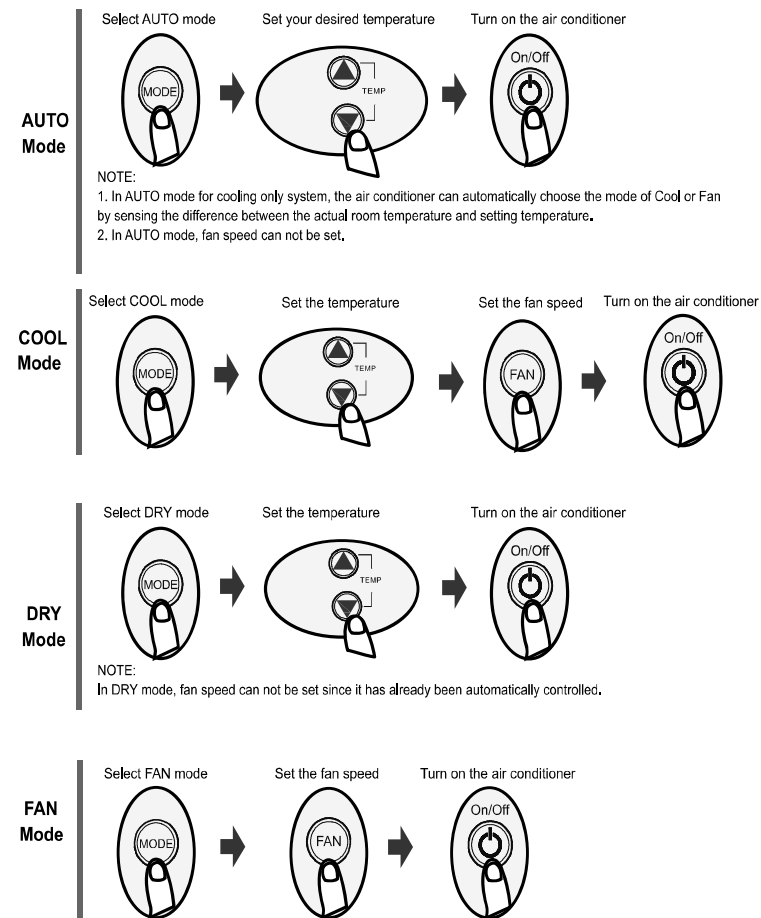
(*indicate optional functions)



3. HOW TO USE BASIC FUNCTIONS

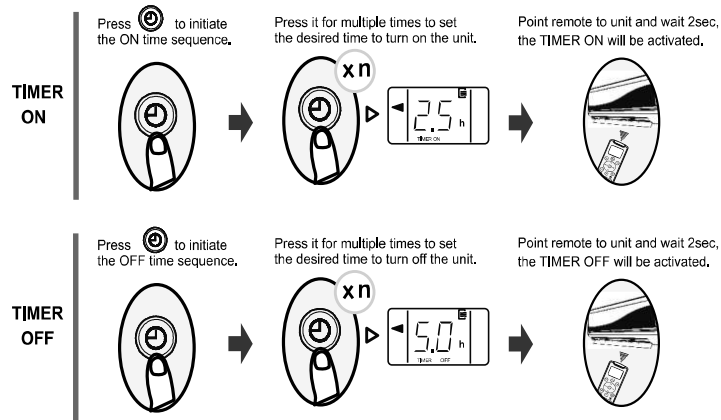
3.1 Basic Operations

! ATTENTION Before operation, please ensure the unit is plugged in and power is available.



3.2 Timer Functions

TIMER ON/OFF - Set the time after which the unit will automatically turn on/off.



NOTE:

1. When setting the **TIMER ON** or **TIMER OFF**, the time will increase by 30 minutes increments with each press, up to 10 hours, After 10 hours and up to 24, it will increase in 1 hour increments. (For example, press 5 times to get 2.5h, and press 21 times to get 11h.) The timer will revert to 0.0 after 24.
2. Cancel either function by setting its timer to 0.0h.
3. Both On and Off Timer can not be set at the same time, i.e., If the Air Conditioner is running, then Timer Off function can be set and If the Air Conditioner is Off, then Timer On function can be set.

4. HOW TO USE ADVANCED FUNCTIONS

