



EXPERIENCE

NE T

Smart Tech
for Personalized Comfort

NEXT INNOVATION

THE INVENTOR

In 1902, Willis Carrier solved one of mankind's most elusive challenges by controlling the indoor environment through modern air conditioning.

His invention enabled countless industries, promoting global productivity, health, and personal comfort.

For more than a century, our research, expertise, and forethought have resulted in market-leading innovations.

Carrier has been present in India since 1986. It was established to fulfil the growing demand of room air conditioners.



Willis Carrier



ABOUT CMI SUPA MANUFACTURING UNIT

Since 2012, Carrier has won the hearts of customers through advanced product solutions with global technology built in India. Manufacturing facility, located in SUPA, Maharashtra, is responsible for creating the world-class quality products that our patrons love and trust, while utilising state-of-the-art energy-saving technological practices. We continuously strive to keep our products up-to-date, while staying ahead of the curve in today's ever-changing tech landscape. Our main objective is to bring next-gen technology to every Indian household.



NEXT IN INNOVATION



XCEL
SERIES



Carrier Xcel proudly wins the prestigious Best in Design award at the India Mark Awards, a testament to our commitment to innovation and excellence. Combining sleek aesthetics with advanced functionality, Carrier Xcel truly embodies the spirit of Next in Innovation.





NEXT  *DESIGN*

INTRODUCING

XPERT SERIES



EXPERIENCE NEXT
SMART TECH FOR
PERSONALIZED COMFORT



Supported with





CARRIER SMART CONNECT (2.0)

Carrier Smart Connect (2.0) offers seamless connectivity between your air conditioner, our service team, and you. With Wi-Fi compatibility, it works effortlessly with Google Home and Alexa Home devices.

Enjoy smart features like Geo-Fencing, which adjusts settings based on your location, and Energy Management, letting you monitor and save energy in real time. Stay informed about your AC's status via the app or customer care, ensuring a hassle-free and efficient cooling experience.

CARRIER Wi-Fi (Ai+) V2

Scan the below QR code to download the Carrier Wi-Fi app



Android



iOS



Powered by iThings
GEO-FENCING
200m - 5km

CARRIER Wi-Fi (1.0) V1

Scan the below QR code to download the Carrier Wi-Fi app



Android



iOS



Powered by iThings



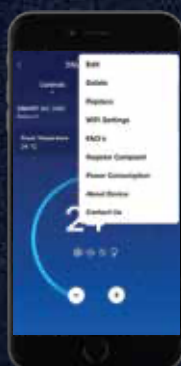
HOW TO REGISTER A COMPLAINT ON CARRIER SMART CONNECT IN CASE OF AN ERROR

STEP 1



To register your complaint, tap on the top 3 dots

STEP 2



Tap on 'Register Complaint'

STEP 3



Fill in the details of your complaint and send them.

STEP 4



You will get a notification on the status of your complaint.



NEXT IN PERFORMANCE

Revolutionary Hybridjet Technology

The revolutionary HYBRIDJET technology in Carrier ACs not only keeps you cool, but itself too. Using a combination of air and low-temperature refrigerant, Carrier HYBRIDJET ACs keep their outdoor E-box cooler and compressor, no matter how hot it gets outside. When other ACs can't function properly over temperatures of 50°C, Carrier HYBRIDJET AC keeps on functioning efficiently even at a temperature of 55°C.

55°C



T&C apply.



>>> **6-in-1 AC** <<< INVERTER TECHNOLOGY

We believe that technology must adapt to human requirements and not the other way around. That's why Carrier ACs come with Flexicool technology. It means that apart from adjusting the AC's cooling performance you can also change the energy consumption of the AC as per your requirement.

CHANGE CAPACITY* AS PER YOUR COOLING NEEDS/WEATHER

1.7 Ton Mode 120% INSTA COOL EXTREME HOT ☀️	1.6 Ton Mode 110% FC5 VERY HOT ☀️	1.5 Ton Mode 100% FC4 HOT ☀️
1.25 Ton Mode 75% - 80% FC3 HUMID ☀️	1.0 Ton Mode 50% - 60% FC2 PLEASANT ☁️	0.8 Ton Mode 40% FC1 COMFY PLEASANT ☁️



*T&C Apply. Data is for 1.5 TR 5 star.

KNOW YOUR FLEXICOOL

UNDERSTANDING COOLING CAPACITY AS PER YOUR NEED/WEATHER



6in1	1.0T - 5 star	1.2T - 5 star	1.5T - 5 star	2.0T - 5 star
FC1	0.5	0.6	0.8	0.9
FC2	0.7	0.85	1	1.25
FC3	0.85	1	1.25	1.5
FC4	1	1.2	1.5	1.7
FC5	1.1	1.3	1.6	1.8
Insta Cool	1.2	1.4	1.7	1.9

6in1	1.0T - 3 star	1.4T - 3 star	1.5T - 3 star	2.0T - 3 star
FC1	0.5	0.7	0.8	0.9
FC2	0.7	1.0	1	1.25
FC3	0.85	1.2	1.25	1.5
FC4	1	1.40	1.5	1.8
FC5	1.1	1.45	1.6	1.9
Insta Cool	1.2	1.55	1.7	2

For more details,
refer the CMI website: www.carriermideaindia.com

FLEXI COOL
— INVERTER TECHNOLOGY —



The values and examples presented are indicative and may vary based on individual circumstances.
T denotes Tonnage category. T&C apply.

INVERTER ACs



XPERT Lumo Fxi Wifi

5 Star Inverter Series



Available Variant | 1.0 TR & 1.5 TR Category



Top filter



Supported with



6-IN-1 AC
WITH
FLEXICOOL
INVERTER TECHNOLOGY
6 modes, up to 50% energy saving.



0.8 kW
SMART ENERGY DISPLAY
Shows real power consumption.



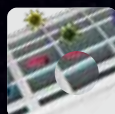
HYBRID JET TECHNOLOGY 2.0
Works in high temperature up to 55°C.



CARRIER SMART CONNECT 2.0
Wi-Fi enabled / Voice controlled via Alexa and Google.



AUTO CLEANSER
Disinfects and cleans the indoor unit.



PM 2.5 FILTER
Gives cleaner and pure air.



HYDRO BLUE FIN COATING
Protects coil and fin against corrosion and increases durability. (Evaporator and condenser both)



INTELLIGENT CRF ALERT
Notifies you to clean filters.



High Air Flow
CFM - 715*



Auto On/Off
Timer



Auto
Restart



Stabilizer Free
Even At 48 Degrees*



Refrigerant Leakage
Detector



Hidden
Display



Backlit
Remote



Air Directional
Control



Follow Me



CAI12PL5R35W0



CAI20PL5R35W0

	TONNAGE CATEGORY	1.0 TR	1.5 TR
Performance	Maximum Cooling Capacity Range (Watts)	4080	5910
	Rated Capacity - Full/Half (Watts) Load	3500 / 1750	5230 / 2615
	Annual Power Consumption (kWh)	536.2	789.6
	Label Period	1 st July 2022 - 31 st Dec 2025	1 st July 2022 - 31 st Dec 2025
	ISEER Value (W/W)	5.05	5.13
	Valve Size (Inch)	1/2 x 1/4	1/2 x 1/4

PERT Lumo Fxi

3 Star Inverter Series



Available Variant

1.1 TR, 1.5 TR & 2 TR
Category



Top
filter



Supported with



6-IN-1 AC

WITH
FLEXICOOL
INVERTER TECHNOLOGY
6 modes,
up to 50%
energy saving.



0.8 kW

**SMART ENERGY
DISPLAY**
Shows real
power
consumption.



**HYBRID JET
TECHNOLOGY 2.0**

Works in high
temperature
up to 55°C.



**INTELLIGENT
CRF ALERT**
Notifies you to
clean filters.



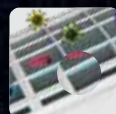
**AUTO
CLEANSER**
Disinfects and
cleans the
indoor unit.



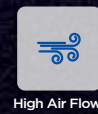
INSTA COOL
Instant cooling
with a single
click.



**HYDRO
BLUE FIN COATING**
Protects coil and fin
against corrosion
and increases
durability.
(Evaporator and
condenser both)



PM 2.5 FILTER
Gives cleaner
and pure air.



High Air Flow
CFM - 715*



Auto On/Off
Timer



Auto
Restart



Stabilizer Free
Even At 48 Degrees*



Refrigerant Leakage
Detector



Hidden
Display



Backlit
Remote



Air Directional
Control



Follow Me



CAI13PL3R35FO



CAI19PL3R35FO



CAI24PL3R35FO

	TONNAGE CATEGORY	1.1 TR	1.5 TR	2 TR
Performance	Maximum Cooling Capacity Range (Watts)	4180	5760	6900
	Rated Capacity - Full/Half (Watts) Load	3630 / 1815	5050 / 2525	6300 / 3150
	Annual Power Consumption (kWh)	721.14	999.69	1249.82
	Label Period	1 st July 2022 - 31 st Dec 2025	1 st July 2022 - 31 st Dec 2025	1 st July 2022 - 31 st Dec 2025
	ISEER Value (W/W)	3.9	3.91	3.9
	Valve Size (Inch)	3/8 x 1/4	1/2 x 1/4	5/8 x 1/4

PERT Edge Fxi

3 Star Inverter Series



Available Variant

1.5 TR
Category



Top
filter



Supported with



6-IN-1 AC
WITH
FLEXICOOL
INVERTER TECHNOLOGY
6 modes,
up to 50%
energy saving.



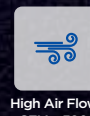
0.8 kW
**SMART ENERGY
DISPLAY**
Shows real
power
consumption.



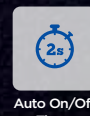
**HYBRID JET
TECHNOLOGY 2.0**
Works in high
temperature
up to 55°C.



**INTELLIGENT
CRF ALERT**
Notifies you to
clean filters.



High Air Flow
CFM - 580*



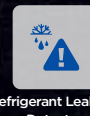
Auto On/Off
Timer



Auto
Restart



Stabilizer Free
Even At 48 Degrees*



Refrigerant Leakage
Detector



Hidden
Display



Backlit
Remote



Air Directional
Control



Follow Me



**AUTO
CLEANSER**
Disinfects and
cleans the
indoor unit.



INSTA COOL
Instant cooling
with a single
click.



**HYDRO
BLUE FIN COATING**
Protects coil and fin
against corrosion
and increases
durability.
(Evaporator and
condenser both)



PM 2.5 FILTER
Gives cleaner
and pure air.



CAI19PE3R35F0

	TONNAGE CATEGORY	1.5 TR
Performance	Maximum Cooling Capacity Range (Watts)	5760
	Rated Capacity - Full/Half (Watts) Load	5050 / 2525
	Annual Power Consumption (kWh)	999.69
	Label Period	1 st July 2022 - 31 st Dec 2025
	ISEER Value (W/W)	3.91
	Valve Size (Inch)	1/2 x 1/4

CEL Lumo Fxi Wifi

5 Star Inverter Series



**INDIA'S FIRST
X-LINE
LED DESIGN**
REGISTERED UNDER
INTELLECTUAL PROPERTY INDIA
398592-001



Supported with

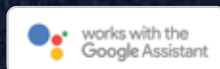


Available Variant | 1 TR, 1.5 TR & 2 TR
Category

6-in-1 AC
INVERTER TECHNOLOGY



SMART
ENERGY DISPLAY



6-IN-1 AC

WITH
FLEXI COOL
INVERTER TECHNOLOGY

6 modes,
up to 50%
energy saving.



0.8 kW

**SMART ENERGY
DISPLAY**
Shows real
power
consumption.



**HYBRID JET
TECHNOLOGY**

Works in high
temperature
up to 55°C.



**CARRIER
SMART CONNECT**

Wi-Fi enabled /
Voice controlled via
Alexa and Google.



PM 2.5 FILTER

Gives cleaner
and pure air.



**AUTO
CLEANSER**
Disinfects and
cleans the
indoor unit.



INSTA COOL
Instant cooling
with a single
click.



**HYDRO
BLUE COATING**
Protects coil and fin
against corrosion
and increases
durability.



**INTELLIGENT
CRF ALERT**
Notifies you to
clean filters.



CAI12CL5R35WO



CAI19CL5R35WO



CAI24CL5R35WO

	TONNAGE CATEGORY	1 TR	1.5 TR	2 TR
Performance	Maximum Cooling Capacity Range (Watts)	4080	5760	6580
	Rated Capacity - Full/Half (Watts) Load	3500 / 1750	5000 / 2500	6000 / 3000
	Annual Power Consumption (kWh)	536.2	754.05	920.55
	Label Period	1 st July 2022 - 31 st Dec 2025	1 st July 2022 - 31 st Dec 2025	1 st July 2022 - 31 st Dec 2025
	ISEER Value (W/W)	5.05	5.13	5.05
	Valve Size (Inch)	1/2 x 1/4	1/2 x 1/4	5/8 x 1/4

XCEL Lumo Fxi

3 Star Inverter Series



**INDIA'S FIRST
X-LINE
LED DESIGN**
REGISTERED UNDER
INTELLECTUAL PROPERTY INDIA
398592-001



Supported with



Available Variant | 1 TR, 1.5 TR & 2 TR
Category

6-in-1 AC
INVERTER TECHNOLOGY



SMART
ENERGY DISPLAY



6-IN-1 AC

WITH
FLEXI COOL
INVERTER TECHNOLOGY

6 modes,
up to 50%
energy saving.



0.8 KW

**SMART ENERGY
DISPLAY**
Shows real
power
consumption.



**HYBRID JET
TECHNOLOGY**

Works in high
temperature
up to 55°C.



**INTELLIGENT
CRF ALERT**
Notifies you to
clean filters.



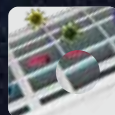
**AUTO
CLEANSER**
Disinfects and
cleans the
indoor unit.



INSTA COOL
Instant cooling
with a single
click.



**HYDRO
BLUE COATING**
Protects coil and fin
against corrosion
and increases
durability.



PM 2.5 FILTER
Gives cleaner
and pure air.



CAI12CL3R35F0



CAI19CL3R35F0



CAI24CL3R35F0

	TONNAGE CATEGORY	1 TR	1.5 TR	2 TR
Performance	Maximum Cooling Capacity Range (Watts)	4080	5760	6900
	Rated Capacity - Full/Half (Watts) Load	3450 / 1725	5050 / 2525	6300 / 3150
	Annual Power Consumption (kWh)	685.62	999.69	1249.82
	Label Period	1 st July 2022 - 31 st Dec 2025	1 st July 2022 - 31 st Dec 2025	1 st July 2022 - 31 st Dec 2025
	ISEER Value (W/W)	3.9	3.91	3.9
	Valve Size (Inch)	3/8 x 1/4	1/2 x 1/4	5/8 x 1/4

CEL Edge Fxi

5 Star Inverter Series



Available Variant | 1 TR, 1.5 TR & 2 TR
Category

0.8 kW

SMART
ENERGY DISPLAY

6-in-1 AC
INVERTER TECHNOLOGY



6-IN-1 AC

WITH
FLEXI COOL
INVERTER TECHNOLOGY
6 modes,
up to 50%
energy saving.



0.8 kW

**SMART ENERGY
DISPLAY**
Shows real
power
consumption.



**HIGH AMBIENT
WORKING**
Works in high
temperature
up to 52°C.



**AUTO
CLEANSER**
Disinfects and
cleans the
indoor unit.



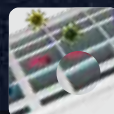
INSTA COOL
Instant cooling
with a single
click.



**HYDRO
BLUE COATING**
Protects coil and fin
against corrosion
and increases
durability.



**INTELLIGENT
CRF ALERT**
Notifies you to
clean filters.



PM 2.5 FILTER
Gives cleaner
and pure air.



CAI12CE5R35FO



CAI19CE5R35FO



CAI24CE5R35FO

TONNAGE CATEGORY		1 TR	1.5 TR	2 TR
Performance	Maximum Cooling Capacity Range (Watts)	4080	5760	6580
	Rated Capacity - Full/Half (Watts) Load	3500 / 1750	5000 / 2500	6000 / 3000
	Annual Power Consumption (kWh)	536.2	754.05	920.55
	Label Period	1 st July 2022 - 31 st Dec 2025	1 st July 2022 - 31 st Dec 2025	1 st July 2022 - 31 st Dec 2025
	ISEER Value (W/W)	5.05	5.13	5.05
	Valve Size (Inch)	1/2 x 1/4	1/2 x 1/4	5/8 x 1/4

CEL Edge Fxi

3 Star Inverter Series



Available Variant | 1 TR, 1.5 TR & 2 TR
Category

0.8 kW

SMART
ENERGY DISPLAY

6-in-1 AC
INVERTER TECHNOLOGY



6-IN-1 AC

WITH
FLEXI COOL
INVERTER TECHNOLOGY
6 modes,
up to 50%
energy saving.



0.8 kW

SMART ENERGY
DISPLAY
Shows real
power
consumption.



HIGH AMBIENT
WORKING
Works in high
temperature
up to 52°C.



AUTO
CLEANSER
Disinfects and
cleans the
indoor unit.



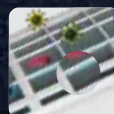
INSTA COOL
Instant cooling
with a single
click.



HYDRO
BLUE COATING*
Protects coil and fin
against corrosion
and increases
durability.



INTELLIGENT
CRF ALERT
Notifies you to
clean filters.



PM 2.5 FILTER
Gives cleaner
and pure air.



CAI12CE3R35FO



CAI18CE3R35FO



CAI18CE3R35W0



CAI19CE3R35FO



CAI24CE3R35FO

	TONNAGE CATEGORY	1 TR	1.5 TR	1.5 TR	1.5 TR	2 TR
Performance	Maximum Cooling Capacity Range (Watts)	4080	5400	5400	5760	6900
	Rated Capacity - Full/Half (Watts) Load	3450 / 1725	4800 / 2400	4800 / 2400	5050 / 2525	6300 / 3150
	Annual Power Consumption (kWh)	685.62	952.68	952.68	999.69	1249.82
	Label Period	1 st July 2022 - 31 st Dec 2025	1 st July 2022 - 31 st Dec 2025	1 st July 2022 - 31 st Dec 2025	1 st July 2022 - 31 st Dec 2025	1 st July 2022 - 31 st Dec 2025
	ISEER Value (W/W)	3.9	3.9	3.9	3.91	3.9
	Valve Size (Inch)	3/8 x 1/4	1/2 x 1/4	1/2 x 1/4	1/2 x 1/4	5/8 x 1/4



www.carriermideaindia.com | www.cmystore.com



Carrier Care: 1800 103 3333

Mentioned model CAI18CE3R35W0 has Wi-Fi (1.0)
T&C apply.

Indus Fxi Smart

5 Star Inverter Series



Available Variant | 1 TR, 1.5 TR & 2 TR
Category



Supported with



SMART
ENERGY DISPLAY



Anti-Viral
Guard



6-IN-1 AC

WITH
FLEXI COOL™
INVERTER TECHNOLOGY

6 modes,
up to 50%
energy saving.



0.8 KW

SMART ENERGY
DISPLAY
Shows real
power
consumption.



HYBRID JET
TECHNOLOGY

Works in high
temperature
up to 55°C.



CARRIER
SMART CONNECT
Wi-Fi enabled /
Voice controlled via
Alexa and Google.



AUTO
CLEANSER
Disinfects and
cleans the
indoor unit.



INSTA COOL
Instant cooling
with a single
click.



HYDRO
BLUE COATING
Protects coil and fin
against corrosion
and increases
durability.



INTELLIGENT
CRF ALERT
Notifies you to
clean filters.



CAI12IN5R35W0



CAI20IN5R35W0



CAI24IN5R35W0

	TONNAGE CATEGORY	1 TR	1.5 TR	2 TR
Performance	Maximum Cooling Capacity Range (Watts)	4080	5910	6580
	Rated Capacity - Full/Half (Watts) Load	3500 / 1750	5230 / 2615	6000 / 3000
	Annual Power Consumption (kWh)	536.2	789.6	920.55
	Label Period	1 st July 2022 - 31 st Dec 2025	1 st July 2022 - 31 st Dec 2025	1 st July 2022 - 31 st Dec 2025
	ISEER Value (W/W)	5.05	5.13	5.05
	Valve Size (Inch)	1/2 x 1/4	1/2 x 1/4	5/8 x 1/4

*T&C apply. Wi-Fi is only available in 5 star

www.carriermideaindia.com | www.cmiestore.com | Carrier Care: 1800 103 3333

Indus Fxi

3 Star Inverter Series



Available Variant | 1 TR, 1.5 TR & 2 TR
Category



6-IN-1 AC
WITH
FLEXI COOL
INVERTER TECHNOLOGY
6 modes,
up to 50%
energy saving.



0.8 KW
**SMART ENERGY
DISPLAY**
Shows real
power
consumption.



**HYBRID JET
TECHNOLOGY**
Works in high
temperature
up to 55°C.



**AUTO
CLEANSER**
Disinfects and
cleans the
indoor unit.



INSTA COOL
Instant cooling
with a single
click.



**HYDRO
BLUE COATING**
Protects coil and fin
against corrosion
and increases
durability.



**INTELLIGENT
CRF ALERT**
Notifies you to
clean filters.



	TONNAGE CATEGORY	1 TR	1.5 TR	2 TR
Performance	Maximum Cooling Capacity Range (Watts)	4080	5850	6900
	Rated Capacity - Full/Half (Watts) Load	3450 / 1725	5130 / 2565	6300 / 3150
	Annual Power Consumption (kWh)	685.62	992.4	1249.82
	Label Period	1 st July 2022 - 31 st Dec 2025	1 st July 2022 - 31 st Dec 2025	1 st July 2022 - 31 st Dec 2025
	ISEER Value (W/W)	3.9	4	3.9
	Valve Size (Inch)	3/8 x 1/4	1/2 x 1/4	5/8 x 1/4

*T&C apply.

Indus **HOT & COLD**

3 Star Inverter Series



Available Variant | 1.5 TR & 2 TR
Category



HEATING & COOLING



HYDRO BLUE COATING



INSTA COOL



Anti-Viral Guard



6-IN-1 AC

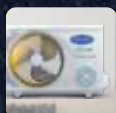
WITH **FLEX COOL**
INVERTER TECHNOLOGY

6 modes, up to 50% energy saving.



0.8 KW

SMART ENERGY DISPLAY
Shows real power consumption.



HYBRID JET TECHNOLOGY

Works in high temperature up to 55°C.



INTELLIGENT CRF ALERT

Notifies you to clean filters.



AUTO CLEANSER
Disinfects and cleans the indoor unit.



INSTA COOL
Instant cooling with a single click.



HYDRO BLUE COATING
Protects coil and fin against corrosion and increases durability.



CAI18IN3R33HO



CAI24IN3R34HO

	TONNAGE CATEGORY	1.5 TR	2 TR
Performance	Maximum Cooling Capacity Range (Watts)	5760	6900
	Rated Capacity - Full/Half (Watts) Load	5100 / 2550	6300 / 3150
	Heating Capacity (Full Load) (Watts)	5000	6300
	Annual Power Consumption (kWh)	988.04	1249.82
	Label Period	1 st July 2022 - 31 st Dec 2025	1 st July 2022 - 31 st Dec 2025
	ISEER Value (W/W)	4	3.9
	Valve Size (Inch)	1/2 x 1/4	5/8 x 1/4

FIXED SPEED ACs



may apply.

Indus Fx

3 Star Fixed Series



Available Variant | 1 TR, 1.5 TR & 2 TR
Category



TURBO MODE
Brings down the temperature rapidly.



REFRIGERANT LEAKAGE DETECTOR
Smart system detects and safeguards the AC.



HD FILTER
Smart system detects and safeguards the AC.



ANTI-VIRAL GUARD
Protects against air borne viruses, bacteria, and germs.



AUTO CLEANSER
Disinfects and cleans the indoor unit.



HIGH AMBIENT WORKING
Works in high temperature up to 52°C.



HYDRO BLUE COATING
Protects coil and fin against corrosion and increases durability.



INTELLIGENT CRF ALERT
Notifies you to clean filters.



	TONNAGE CATEGORY	1 TR	1.5 TR	1.5 TR	2 TR
Performance	Rated Capacity* (Watts)	3600	5200	5200	6050
	Nominal Cooling / Heating Power Input* (Watts)	940	1350	1350	1570
	Annual Power Consumption (kWh)	727.66	1045.04	1045.04	1215.35
	Label Period	1 st July 2022 - 31 st Dec 2025	1 st July 2022 - 31 st Dec 2025	1 st July 2022 - 31 st Dec 2025	1 st July 2022 - 31 st Dec 2025
	ISEER Value (W/W)	3.83	3.85	3.85	3.85
	Valve Size (Inch)	1/2 x 1/4	1/2 x 1/4	1/2 x 1/4	5/8 x 1/4

WINDOW ACs



ESTRELLA Fxi

3 & 5 Star Inverter Series

Available Variant | 1.5 TR
Category



HIGH AMBIENT WORKING
Works in high temperature up to 52°C.



TURBO MODE
Brings down the temperature rapidly.



AIR DIRECTIONAL CONTROL
Protects fin against corrosion and increases durability.



ENERGY SAVER MODE
Right temperature at low power bill.



DUST FILTER
High-efficient cooling and assured durability.



HYDRO BLUE COATING
Protects coil and fin against corrosion and increases durability.



CIW19EC3R35FO



CIW19EC5R35FO

	TONNAGE CATEGORY	1.5 TR	1.5 TR
Performance	Rated Capacity - Full/Half (Watts) Load	5000 / 2500	5150 / 2575
	Annual Power Consumption (kWh)	1210.35	1114.62
	Label Period	1 st July 2022 - 31 st Dec 2025	1 st July 2022 - 31 st Dec 2025
	ISEER Value (W/W)	3.2	3.58

ESTRELLA Fxi (E)

5 Star Inverter Series

Available Variant | 1.5 TR
Category



HIGH AMBIENT WORKING
Works in high temperature up to 52°C.



TURBO MODE
Brings down the temperature rapidly.



SLEEP MODE
Automatically switches off the unit after 7 hours.



ENERGY SAVER MODE
Right temperature at low power bill.



DUST FILTER
High-efficient cooling and assured durability.



HYDRO BLUE COATING*
Protects coil and fin against corrosion and increases durability.



CIW19EC5R35F1

	TONNAGE CATEGORY	1.5 TR
Performance	Rated Capacity - Full/Half (Watts) Load	5070 / 2535
	Annual Power Consumption (kWh)	1104.37
	Label Period	1 st July 2022 - 31 st Dec 2025
	ISEER Value (W/W)	3.55

ESTRELLA Fx

3 Star Fixed Speed

Available Variant | 1 TR
Category



HIGH AMBIENT WORKING
Works in high temperature up to 50°C.



TURBO MODE
Brings down the temperature rapidly.



AIR DIRECTIONAL CONTROL
Protects fin against corrosion and increases durability.



ENERGY SAVER MODE
Right temperature at low power bill.



DUST FILTER
High-efficient cooling and assured durability.



HYDRO BLUE COATING*
Protects coil and fin against corrosion and increases durability.



CAW12EC3R34F0

Performance	TONNAGE CATEGORY	
	Rated Capacity - Full/Half (Watts) Load	1 TR 3300
	Nominal Power Input (Watts)	1050
	Annual Power Consumption (kWh)	812.81
	Label Period	1 st July 2022 - 31 st Dec 2025
	ISEER Value (W/W)	3.14

ESTRELLA Fx

3 Star Fixed Speed

Available Variant | 1.5 TR & 2 TR
Category



HIGH AMBIENT WORKING
Works in high temperature up to 50°C.



TURBO MODE
Brings down the temperature rapidly.



AIR DIRECTIONAL CONTROL
Protects fin against corrosion and increases durability.



ENERGY SAVER MODE
Right temperature at low power bill.



DUST FILTER
High-efficient cooling and assured durability.



HYDRO BLUE COATING*
Protects coil and fin against corrosion and increases durability.



CAW19EC3R35FO



CAW24EC3R32FO

	TONNAGE CATEGORY	1.5 TR	2 TR
Performance	Rated Capacity - Full/Half (Watts) Load	5000	6000
	Nominal Power Input (Watts)	1558	1875
	Annual Power Consumption (kWh)	1206.06	1451.45
	Label Period	1 st July 2022 - 31 st Dec 2025	1 st July 2022 - 31 st Dec 2025
	ISEER Value (W/W)	3.21	3.2

Presenting

Estrella

Platinum-X



5 Star Inverter Series
Available Variant | 1.5 TR

Xperience next-level comfort with Carrier's through-the-wall air conditioner, delivering the perfect temperature for the spaces you love.



CIW19EP5R35F0

	TONNAGE CATEGORY	1.5 TR
Performance	Rated Capacity - Full/Half (Watts) Load	5050 / 2525
	Annual Power Consumption (kWh)	1092.74
	Label Period	1 st July 2022 - 31 st Dec 2025
	ISEER Value (W/W)	3.58

3 Star Inverter Range - 2025

	PARAMETER (UNIT)	XCEL EDGE Fxi	XCEL EDGE FXI	XCEL EDGE FXI	XCEL EDGE Fxi	XCEL LUMO Fxi
GENERAL	MODEL NO.	CAI12CE3R35F0	CAI18CE3R35F0	CAI19CE3R35F0	CAI24CE3R35F0	CAI12CL3R35F0
	TONNAGE CATEGORY (TR)	1.0	1.5	1.5	2.0	1.0
	MAXIMUM CAPACITY RANGE (WATTS)	4080	5400	5760	6900	4080
	FULL LOAD CAPACITY (100% LOAD RATED) (WATTS)	3450	4800	5050	6300	3450
	HALF LOAD CAPACITY (50%) (WATTS)	1725	2400	2525	3150	1725
	FULL LOAD POWER INPUT* (100% LOAD RATED) (WATTS)	1050	1560	1590	2000	1050
	HALF LOAD POWER INPUT* (50% LOAD) (WATTS)	435	572	615	765	435
	ANNUAL POWER CONSUMPTION (KWH)	685.62	952.68	999.69	1249.82	685.62
	LABEL PERIOD	1 ST JULY 2022 - 31 ST DEC 2025	1 ST JULY 2022 - 31 ST DEC 2025	1 ST JULY 2022 - 31 ST DEC 2025	1 ST JULY 2022 - 31 ST DEC 2025	1 ST JULY 2022 - 31 ST DEC 2025
	BEE STAR RATING***	3 STAR	3 STAR	3 STAR	3 STAR	3 STAR
	ISEER VALUE (W/W)	3.9	3.9	3.91	3.9	3.9
	RATED POWER SUPPLY (V-PH-HZ)	230 - 1 - 50	230 - 1 - 50	230 - 1 - 50	230 - 1 - 50	230 - 1 - 50
	RATED AMP (AMP)	4.6	6.9	7.0	8.8	4.6
	NET WEIGHT (KGS) (IDU/ODU)	8.3/ 21.7	10.1 / 25.5	10.3 / 25.5	12.5 / 28	8.3/21.7
	AIR FLOW RATE (CFM)	380	580	580	700	380
	INDOOR NOISE LEVEL (H/M/L) (DB)	40/38/32	42/40/37	42/40/37	46/44/39	40/38/32
	FAN MOTOR (INDOOR) (NO. OF SPEEDS)	4	4	4	4	4
	WITH CONNECTING KIT PIPE	YES	YES	YES	YES	YES
	VALVE SIZE (INCH)	3/8" X 1/4"	1/2" X 1/4"	1/2" X 1/4"	5/8" X 1/4"	3/8" X 1/4"
	MOISTURE REMOVAL RATE (KG/HR)	1.2	2.0	2.0	2.4	1.2
OVERALL SIZE	INDOOR UNIT (HEIGHT) (MM)	275	275	275	315	275
	INDOOR UNIT (WIDTH) (MM)	800	940	940	1045	800
	INDOOR UNIT (DEPTH) (MM)	188	205	205	235	188
	OUTDOOR UNIT (HEIGHT) (MM)	540	540	540	540	540
	OUTDOOR UNIT (WIDTH) (MM)	790	790	790	790	790
	OUTDOOR UNIT (DEPTH-WITH GRILL) (MM)	270	270	270	270	280
FILTERS	CONVENTIONAL HD FILTER	YES	YES	YES	YES	YES
	TOP HD FILTER (XPERT)	NA	NA	NA	NA	NA
	PM 2.5 MICRON FILTER(3M BRAND)	NA	NA	NA	NA	NA
	PM 2.5 MICRON FILTER	YES	YES	YES	YES	YES
	AG+ NANO FILTER	NA	NA	NA	NA	NA
	(AVG) ANTIVIRAL GUARD COATED FILTER	NA	NA	NA	NA	NA
FEATURES	HYBRIDJET GRILL	NA	NA	NA	NA	YES
	HYBRIDJET GRILL (2.0)	NA	NA	NA	NA	NA
	REFRIGERANT	R32	R32	R32	R32	R32
	AIR DIRECTION CONTROL	YES	YES	YES	YES	YES
	SECURITY LOCK	YES	YES	YES	YES	YES
	IDU TEMP DISPLAY	HIDDEN DISPLAY	HIDDEN DISPLAY	HIDDEN DISPLAY	HIDDEN DISPLAY	HIDDEN DISPLAY
	REMOTE CONTROL TYPE	LCD REMOTE	LCD REMOTE	LCD REMOTE	LCD REMOTE	LCD REMOTE
	REMOTE BACKLIT	YES	YES	YES	YES	YES
	AUTO OFF TIMER	YES	YES	YES	YES	YES
	AUTO ON TIMER	YES	YES	YES	YES	YES
	SLEEP MODE	YES	YES	YES	YES	YES
	REFRIGERANT LEAKAGE DETECTOR	YES	YES	YES	YES	YES
	LOUVER POSITION MEMORY	YES	YES	YES	YES	YES
	DRY MODE	YES	YES	YES	YES	YES
	AUTO FAN SPEED	YES	YES	YES	YES	YES
	INTELLIGENT CRF ALERT	YES	YES	YES	YES	YES
	AUTO SWING	YES	YES	YES	YES	YES
	AUTO CLEANER	YES	YES	YES	YES	YES
	FOLLOW ME	YES	YES	YES	YES	YES
	AUTO MODE	YES	YES	YES	YES	YES
	AUTO RESTART	YES	YES	YES	YES	YES
	DOUBLE DRAIN (EASY INSTALLATION)	YES	YES	YES	YES	YES
	EASY INSTALLATION - SERVICE SUPPORT BRACKET IDU	NA	NA	NA	NA	NA
	FLEXICOOL (6 IN 1)	YES	YES	YES	YES	YES
	INSTA COOL/TURBO	YES	YES	YES	YES	YES
	WI FI (VER-1.0)	NA	NA	NA	NA	NA
	WI FI (VER-2.0 AI+)	NA	NA	NA	NA	NA
	GOOGLE ACTION (OPTIONAL)	NA	NA	NA	NA	NA
	AMAZON ALEXA (OPTIONAL)	NA	NA	NA	NA	NA
	MY MODE (FAVOURITE MODE)	YES	YES	YES	YES	YES
	TEMP DISPLAY ON/OFF	YES	YES	YES	YES	YES
	SILENT	NA	NA	NA	NA	NA
	4-WAY SWING	NA	NA	NA	NA	NA
	ANTI CORROSION COATING (BLUE)	EVAP-HAIR PIN IN SIDE	EVAP-HAIR PIN IN SIDE	EVAP- HAIR PIN IN SIDE	EVAP-HAIR PIN IN SIDE	EVAP-HAIR PIN IN SIDE
	HYDROPHILIC BLUE COIL	ONLY EVAP	ONLY EVAP	ONLY EVAP	ONLY EVAP	ONLY EVAP
	HIGH AMBIENT WORKING	52°C	52°C	52°C	52°C	55°C EVEN AT 195V
	STABILIZER FREE OPERATION (EVEN @48°C, 135-280V)	YES	YES	YES	YES	YES
	KW / SED DISPLAY	KW DISPLAY	KW DISPLAY	KW DISPLAY	KW DISPLAY	KW DISPLAY
	X-LED VBL (DYNAMIC 2.0)	NA	NA	NA	NA	YES

3 Star Inverter Range - 2025

	PARAMETER (UNIT)	XCEL LUMO FXI	XCEL LUMO Fxi	INDUS FXI	INDUS FXI	INDUS FXI
GENERAL	MODEL NO.	CAI19CL3R35F0	CAI24CL3R35F0	CAI12IN3R35F0	CAI19IN3R35F1	CAI24IN3R35F0
	TONNAGE CATEGORY (TR)	1.5	2.0	1.0	1.5	2.0
	MAXIMUM CAPACITY RANGE (WATTS)	5760	6900	4080	5850	6900
	FULL LOAD CAPACITY (100% LOAD RATED) (WATTS)	5050	6300	3450	5130	6300
	HALF LOAD CAPACITY (50%) (WATTS)	2525	3150	1725	2565	3150
	FULL LOAD POWER INPUT* (100% LOAD RATED) (WATTS)	1590	2000	1050	1560	2000
	HALF LOAD POWER INPUT*(50% LOAD) (WATTS)	615	765	435	610	765
	ANNUAL POWER CONSUMPTION (KWH)	999.69	1249.82	685.62	992.4	1249.82
	LABEL PERIOD	1 ST JULY 2022 - 31 ST DEC 2025	1 ST JULY 2022 - 31 ST DEC 2025	1 ST JULY 2022 - 31 ST DEC 2025	1 ST JULY 2022 - 31 ST DEC 2025	1 ST JULY 2022 - 31 ST DEC 2025
	BEE STAR RATING***	3 STAR	3 STAR	3 STAR	3 STAR	3 STAR
	ISEER VALUE (W/W)	3.91	3.9	3.9	4	3.9
	RATED POWER SUPPLY (V-PH-HZ)	230 - 1 - 50	230 - 1 - 50	230 - 1 - 50	230 - 1 - 50	230 - 1 - 50
	RATED AMP (AMP)	7.0	8.8	4.6	6.9	8.8
	NET WEIGHT (KGS) (IDU/ODU)	10.3 / 25.5	12.5 / 28	8.3/ 21.7	11.5 / 25.5	12.2 / 28
	AIR FLOW RATE (CFM)	580	700	380	600	700
	INDOOR NOISE LEVEL (H/M/L) (DB)	42/40/37	46/44/39	40/38/32	42/40/37	46/44/39
	FAN MOTOR (INDOOR) (NO.OF SPEEDS)	4	4	4	4	4
	WITH CONNECTING KIT PIPE	YES	YES	YES	YES	YES
	VALVE SIZE (INCH)	1/2" X 1/4"	5/8" X 1/4"	3/8" X 1/4"	1/2" X 1/4"	5/8" X 1/4"
	MOISTURE REMOVAL RATE (KG/HR)	2.0	2.4	1.2	2.0	2.4
OVERALL SIZE	INDOOR UNIT (HEIGHT) (MM)	275	315	282	324	320
	INDOOR UNIT (WIDTH) (MM)	940	1045	798	965	1046
	INDOOR UNIT (DEPTH) (MM)	205	235	192	234	240
	OUTDOOR UNIT (HEIGHT) (MM)	540	540	540	540	540
	OUTDOOR UNIT (WIDTH) (MM)	790	790	790	790	790
	OUTDOOR UNIT (DEPTH-WITH GRILL) (MM)	280	280	280	280	280
FILTERS	CONVENTIONAL HD FILTER	YES	YES	YES	YES	YES
	TOP HD FILTER (XPERT)	NA	NA	NA	NA	NA
	PM 2.5 MICRON FILTER(3M BRAND)	NA	NA	NA	NA	NA
	PM 2.5 MICRON FILTER	YES	YES	NA	NA	NA
	AG+ NANO FILTER	NA	NA	NA	NA	NA
	(AVG) ANTIVIRAL GUARD COATED FILTER	NA	NA	YES	YES	YES
FEATURES	HYBRIDJET GRILL	YES	YES	YES	YES	YES
	HYBRIDJET GRILL (2.0)	NA	NA	NA	NA	NA
	REFRIGERANT	R32	R32	R32	R32	R32
	AIR DIRECTION CONTROL	YES	YES	YES	YES	YES
	SECURITY LOCK	YES	YES	YES	YES	YES
	IDU TEMP DISPLAY	HIDDEN DISPLAY	HIDDEN DISPLAY	HIDDEN DISPLAY	HIDDEN DISPLAY	HIDDEN DISPLAY
	REMOTE CONTROL TYPE	LCD REMOTE	LCD REMOTE	LCD REMOTE	LCD REMOTE	LCD REMOTE
	REMOTE BACKLIT	YES	YES	YES	YES	YES
	AUTO OFF TIMER	YES	YES	YES	YES	YES
	AUTO ON TIMER	YES	YES	YES	YES	YES
	SLEEP MODE	YES	YES	YES	YES	YES
	REFRIGERANT LEAKAGE DETECTOR	YES	YES	YES	YES	YES
	LOUVER POSITION MEMORY	YES	YES	YES	YES	YES
	DRY MODE	YES	YES	YES	YES	YES
	AUTO FAN SPEED	YES	YES	YES	YES	YES
	INTELLIGENT CRF ALERT	YES	YES	YES	YES	YES
	AUTO SWING	YES	YES	YES	YES	YES
	AUTO CLEANER	YES	YES	YES	YES	YES
	FOLLOW ME	YES	YES	YES	YES	YES
	AUTO MODE	YES	YES	YES	YES	YES
	AUTO RESTART	YES	YES	YES	YES	YES
	DOUBLE DRAIN (EASY INSTALLATION)	YES	YES	YES	YES	YES
	EASY INSTALLATION - SERVICE SUPPORT BRACKET IDU	NA	NA	NA	NA	NA
	FLEXICOOL (6 IN 1)	YES	YES	YES	YES	YES
	INSTA COOL/TURBO	YES	YES	YES	YES	YES
	WI FI (VER-1.0)	NA	NA	NA	NA	NA
	WI FI (VER-2.0 AI+)	NA	NA	NA	NA	NA
	GOOGLE ACTION (OPTIONAL)	NA	NA	NA	NA	NA
	AMAZON ALEXA (OPTIONAL)	NA	NA	NA	NA	NA
	MY MODE (FAVOURITE MODE)	YES	YES	YES	YES	YES
	TEMP DISPLAY ON/OFF	YES	YES	YES	YES	YES
	SILENT	NA	NA	NA	NA	NA
	4-WAY SWING	NA	NA	NA	NA	NA
	ANTI CORROSION COATING (BLUE)	EVAP-HAIR PIN IN SIDE	EVAP-HAIR PIN IN SIDE	EVAP-HAIR PIN IN SIDE	EVAP-HAIR PIN IN SIDE	EVAP-HAIR PIN IN SIDE
	HYDROPHILIC BLUE COIL	ONLY EVAP	ONLY EVAP	ONLY EVAP	ONLY EVAP	ONLY EVAP
	HIGH AMBIENT WORKING	55°C EVEN AT 195V	55°C EVEN AT 195V	55°C EVEN AT 195V	55°C EVEN AT 195V	55°C EVEN AT 195V
	STABILIZER FREE OPERATION (EVEN @48°C, 135-280V)	YES	YES	YES	YES	YES
	KW / SED DISPLAY	KW DISPLAY	KW DISPLAY	KW DISPLAY	KW DISPLAY	KW DISPLAY
	X-LED VBL (DYNAMIC 2.0)	YES	YES	NA	NA	NA

5 Star Inverter Range - 2025

	PARAMETER (UNIT)	XCEL EDGE Fxi	XCEL EDGE Fxi	XCEL EDGE Fxi	XCEL LUMO Fxi Wi-Fi	XCEL LUMO Fxi Wi-Fi
GENERAL	MODEL NO.	CAI12CE5R35F0	CAI19CE5R35F0	CAI24CE5R35F0	CAI12CLS5R35W0	CAI19CLS5R35W0
	TONNAGE CATEGORY (TR)	1.0	1.5	2.0	1.0	1.5
	MAXIMUM CAPACITY RANGE (WATTS)	4080	5760	6580	4080	5760
	FULL LOAD CAPACITY (100% LOAD RATED) (WATTS)	3500	5000	6000	3500	5000
	HALF LOAD CAPACITY (50%) (WATTS)	1750	2500	3000	1750	2500
	FULL LOAD POWER INPUT* (100% LOAD RATED) (WATTS)	840	1260	1500	840	1260
	HALF LOAD POWER INPUT*(50% LOAD) (WATTS)	334	445	555	334	445
	ANNUAL POWER CONSUMPTION (KWH)	536.2	754.05	920.55	536.2	754.05
	LABEL PERIOD	1 ST JULY 2022 - 31 ST DEC 2025	1 ST JULY 2022 - 31 ST DEC 2025	1 ST JULY 2022 - 31 ST DEC 2025	1 ST JULY 2022 - 31 ST DEC 2025	1 ST JULY 2022 - 31 ST DEC 2025
	BEE STAR RATING***	5 STAR	5 STAR	5 STAR	5 STAR	5 STAR
	ISEER VALUE (W/W)	5.05	5.13	5.05	5.05	5.13
	RATED POWER SUPPLY (V-PH-HZ)	230 - 1 - 50	230 - 1 - 50	230 - 1 - 50	230 - 1 - 50	230 - 1 - 50
	RATED AMP (AMP)	3.8	5.5	6.6	3.8	5.5
	NET WEIGHT (KGS) (IDU/ODU)	8.3 / 26	10.3 / 27.1	12.5 / 38.5	8.3 / 26	10.3 / 27.1
	AIR FLOW RATE (CFM)	380	580	700	380	580
	INDOOR NOISE LEVEL (H/M/L) (DB)	40/38/32	44/42/38	46/44/38	40/38/32	44/42/38
	FAN MOTOR (INDOOR) (NO.OF SPEEDS)	4	4	4	4	4
	WITH CONNECTING KIT PIPE	YES	YES	YES	YES	YES
	VALVE SIZE (INCH)	1/2" X 1/4"	1/2" X 1/4"	5/8" X 1/4"	1/2" X 1/4"	1/2" X 1/4"
	MOISTURE REMOVAL RATE (KG/HR)	1.2	2.0	2.4	1.2	2.0
OVERALL SIZE	INDOOR UNIT (HEIGHT) (MM)	275	275	315	275	275
	INDOOR UNIT (WIDTH) (MM)	800	940	1045	800	940
	INDOOR UNIT (DEPTH) (MM)	188	205	235	188	205
	OUTDOOR UNIT (HEIGHT) (MM)	540	540	700	540	540
	OUTDOOR UNIT (WIDTH) (MM)	790	790	845	790	790
	OUTDOOR UNIT (DEPTH-WITH GRILL) (MM)	270	270	310	280	280
FILTERS	CONVENTIONAL HD FILTER	YES	YES	YES	YES	YES
	TOP HD FILTER (XPERT)	NA	NA	NA	NA	NA
	PM 2.5 MICRON FILTER(3M BRAND)	NA	NA	NA	NA	NA
	PM 2.5 MICRON FILTER	YES	YES	YES	YES	YES
	AG+ NANO FILTER	NA	NA	NA	NA	NA
	(AVG) ANTIVIRAL GUARD COATED FILTER	NA	NA	NA	NA	NA
FEATURES	HYBRIDJET GRILL	NA	NA	NA	YES	YES
	HYBRIDJET GRILL (2.0)	NA	NA	NA	NA	NA
	REFRIGERANT	R32	R32	R32	R32	R32
	AIR DIRECTION CONTROL	YES	YES	YES	YES	YES
	SECURITY LOCK	YES	YES	YES	YES	YES
	IDU TEMP DISPLAY	HIDDEN DISPLAY	HIDDEN DISPLAY	HIDDEN DISPLAY	HIDDEN DISPLAY	HIDDEN DISPLAY
	REMOTE CONTROL TYPE	LCD REMOTE	LCD REMOTE	LCD REMOTE	LCD REMOTE	LCD REMOTE
	REMOTE BACKLIT	YES	YES	YES	YES	YES
	AUTO OFF TIMER	YES	YES	YES	YES	YES
	AUTO ON TIMER	YES	YES	YES	YES	YES
	SLEEP MODE	YES	YES	YES	YES	YES
	REFRIGERANT LEAKAGE DETECTOR	YES	YES	YES	YES	YES
	LOUVER POSITION MEMORY	YES	YES	YES	YES	YES
	DRY MODE	YES	YES	YES	YES	YES
	AUTO FAN SPEED	YES	YES	YES	YES	YES
	INTELLIGENT CRF ALERT	YES	YES	YES	YES	YES
	AUTO SWING	YES	YES	YES	YES	YES
	AUTO CLEANER	YES	YES	YES	YES	YES
	FOLLOW ME	YES	YES	YES	YES	YES
	AUTO MODE	YES	YES	YES	YES	YES
	AUTO RESTART	YES	YES	YES	YES	YES
	DOUBLE DRAIN (EASY INSTALLATION)	YES	YES	YES	YES	YES
	EASY INSTALLATION - SERVICE SUPPORT BRACKET IDU	NA	NA	NA	NA	NA
	FLEXICOOL (6 IN 1)	YES	YES	YES	YES	YES
	INSTA COOL/TURBO	YES	YES	YES	YES	YES
	WI FI (VER-1.0)	NA	NA	NA	YES	YES
	WI FI (VER-2.0 AI+)	NA	NA	NA	NA	NA
	GOOGLE ACTION (OPTIONAL)	NA	NA	NA	YES	YES
	AMAZON ALEXA (OPTIONAL)	NA	NA	NA	YES	YES
	MY MODE (FAVOURITE MODE)	YES	YES	YES	YES	YES
	TEMP DISPLAY ON/OFF	YES	YES	YES	YES	YES
	SILENT	NA	NA	NA	NA	NA
	4-WAY SWING	NA	NA	NA	NA	NA
	ANTI CORROSION COATING (BLUE)	EVAP-HAIR PIN IN SIDE	EVAP-HAIR PIN IN SIDE	EVAP-HAIR PIN IN SIDE	EVAP-HAIR PIN IN SIDE	EVAP-HAIR PIN IN SIDE
	HYDROPHILIC BLUE COIL	ONLY EVAP	ONLY EVAP	ONLY EVAP	ONLY EVAP	ONLY EVAP
	HIGH AMBIENT WORKING	52°C	52°C	52°C	55°C EVEN AT 195V	55°C EVEN AT 195V
	STABILIZER FREE OPERATION (EVEN @48°C, 135-280V)	YES	YES	YES	YES	YES
	KW / SED DISPLAY	KW DISPLAY	KW DISPLAY	KW DISPLAY	KW DISPLAY	KW DISPLAY
	X-LED VBL (DYNAMIC 2.0)	NA	NA	NA	YES	YES

3 & 5 Star Inverter Range - 2025

	PARAMETER (UNIT)	XCEL LUMO Fxi WI-FI	INDUS EXi SMART	INDUS Fxi SMART	INDUS Fxi SMART	XPERT EDGE Fxi
GENERAL	MODEL NO.	CAI24CLR35W0	CAI12INSR35W0	CAI20INSR35W0	CAI24INSR35W0	CAI19PE3R35F0
	TONNAGE CATEGORY (TR)	2.0	1.0	1.5	2.0	1.5
	MAXIMUM CAPACITY RANGE (WATTS)	6580	4080	5910	6580	5760
	FULL LOAD CAPACITY (100% LOAD RATED) (WATTS)	6000	3500	5230	6000	5050
	HALF LOAD CAPACITY (50%) (WATTS)	3000	1750	2615	3000	2525
	FULL LOAD POWER INPUT* (100% LOAD RATED) (WATTS)	1500	840	1290	1500	1590
	HALF LOAD POWER INPUT*(50% LOAD) (WATTS)	555	334	475	555	615
	ANNUAL POWER CONSUMPTION (KWH)	920.55	536.2	789.6	920.55	999.69
	LABEL PERIOD	1 ST JULY 2022 - 31 ST DEC 2025	1 ST JULY 2022 - 31 ST DEC 2025	1 ST JULY 2022 - 31 ST DEC 2025	1 ST JULY 2022 - 31 ST DEC 2025	1 ST JULY 2022 - 31 ST DEC 2025
	BEE STAR RATING***	5 STAR	5 STAR	5 STAR	5 STAR	3 STAR
	ISEER VALUE (W/W)	5.05	5.05	5.13	5.05	3.91
	RATED POWER SUPPLY (V-PH-HZ)	230 - 1 - 50	230 - 1 - 50	230 - 1 - 50	230 - 1 - 50	230 - 1 - 50
	RATED AMP (AMP)	6.6	3.8	5.8	6.6	7.0
	NET WEIGHT (KGS) (IDU/ODU)	12.5 / 38.5	8.4 / 26	11.5 / 27.1	12.5 / 38.5	10/ 25.5
	AIR FLOW RATE (CFM)	700	380	600	700	580
	INDOOR NOISE LEVEL (H/M/L) (DB)	46/44/38	40/38/32	44/42/38	46/44/38	44/41/35
	FAN MOTOR (INDOOR) (NO.OF SPEEDS)	4	4	4	4	5
	WITH CONNECTING KIT PIPE	YES	YES	YES	YES	YES
	VALVE SIZE (INCH)	5/8" X 1/4"	1/2" X 1/4"	1/2" X 1/4"	5/8" X 1/4"	1/2" X 1/4"
	MOISTURE REMOVAL RATE (KG/HR)	2.4	1.2	2.0	2.4	2
OVERALL SIZE	INDOOR UNIT (HEIGHT) (MM)	315	282	324	320	328
	INDOOR UNIT (WIDTH) (MM)	1045	798	965	1046	870
	INDOOR UNIT (DEPTH) (MM)	235	192	234	240	250
	OUTDOOR UNIT (HEIGHT) (MM)	700	540	540	700	540
	OUTDOOR UNIT (WIDTH) (MM)	845	790	790	845	790
	OUTDOOR UNIT (DEPTH-WITH GRILL) (MM)	335	280	280	335	270
FILTERS	CONVENTIONAL HD FILTER	YES	YES	YES	YES	NA
	TOP HD FILTER (XPERT)	NA	NA	NA	NA	YES
	PM 2.5 MICRON FILTER(3M BRAND)	NA	NA	NA	NA	NA
	PM 2.5 MICRON FILTER	YES	NA	NA	NA	YES
	AG+ NANO FILTER	NA	NA	NA	NA	NA
	(AVG) ANTIVIRAL GUARD COATED FILTER	NA	YES	YES	YES	NA
FEATURES	HYBRIDJET GRILL	YES	YES	YES	YES	NA
	HYBRIDJET GRILL (2.0)	NA	NA	NA	NA	YES
	REFRIGERANT	R32	R32	R32	R32	R32
	AIR DIRECTION CONTROL	YES	YES	YES	YES	YES
	SECURITY LOCK	YES	YES	YES	YES	YES
	IDU TEMP DISPLAY	HIDDEN DISPLAY	HIDDEN DISPLAY	HIDDEN DISPLAY	HIDDEN DISPLAY	HIDDEN DISPLAY
	REMOTE CONTROL TYPE	LCD REMOTE	LCD REMOTE	LCD REMOTE	LCD REMOTE	LCD REMOTE
	REMOTE BACKLIT	YES	YES	YES	YES	YES
	AUTO OFF TIMER	YES	YES	YES	YES	YES
	AUTO ON TIMER	YES	YES	YES	YES	YES
	SLEEP MODE	YES	YES	YES	YES	YES
	REFRIGERANT LEAKAGE DETECTOR	YES	YES	YES	YES	YES
	LOUVER POSITION MEMORY	YES	YES	YES	YES	YES
	DRY MODE	YES	YES	YES	YES	YES
	AUTO FAN SPEED	YES	YES	YES	YES	YES
	INTELLIGENT CRF ALERT	YES	YES	YES	YES	YES
	AUTO SWING	YES	YES	YES	YES	YES
	AUTO CLEANER	YES	YES	YES	YES	YES
	FOLLOW ME	YES	YES	YES	YES	YES
	AUTO MODE	YES	YES	YES	YES	YES
	AUTO RESTART	YES	YES	YES	YES	YES
	DOUBLE DRAIN (EASY INSTALLATION)	YES	YES	YES	YES	YES
	EASY INSTALLATION - SERVICE SUPPORT BRACKET IDU	NA	NA	NA	NA	YES
	FLEXICOOL (6 IN 1)	YES	YES	YES	YES	YES
	INSTA COOL/TURBO	YES	YES	YES	YES	YES
	WI FI (VER-1.0)	YES	YES	YES	YES	NA
	WI FI (VER-2.0 AI+)	NA	NA	NA	NA	NA
	GOOGLE ACTION (OPTIONAL)	YES	YES	YES	YES	NA
	AMAZON ALEXA (OPTIONAL)	YES	YES	YES	YES	NA
	MY MODE (FAVOURITE MODE)	YES	YES	YES	YES	YES
	TEMP DISPLAY ON/OFF	YES	YES	YES	YES	YES
	SILENT	NA	NA	NA	NA	YES
	4-WAY SWING	NA	NA	NA	NA	YES
	ANTI CORROSION COATING (BLUE)	EVAP-HAIR PIN IN SIDE	EVAP-HAIR PIN IN SIDE	EVAP-HAIR PIN IN SIDE	EVAP-HAIR PIN IN SIDE	EVAP-HAIR PIN IN SIDE
	HYDROPHILIC BLUE COIL	ONLY EVAP	ONLY EVAP	ONLY EVAP	ONLY EVAP	EVAP & COND BOTH
	HIGH AMBIENT WORKING	55°C EVEN AT 195V	55°C EVEN AT 195V	55°C EVEN AT 195V	55°C EVEN AT 195V	55°C EVEN AT 195V
	STABILIZER FREE OPERATION (EVEN @48°C, 135-280V)	YES	YES	YES	YES	YES
	KW / SED DISPLAY	KW DISPLAY	KW DISPLAY	KW DISPLAY	KW DISPLAY	KW DISPLAY
	X-LED VBL (DYNAMIC 2.0)	YES	NA	NA	NA	NA

3 & 5 Star Inverter Range - 2025

	PARAMETER (UNIT)	XPERT LUMO FXI	XPERT LUMO FXI	XPERT LUMO FXI	XPERT LUMO Fxi Wi-Fi	XPERT LUMO Fxi Wi-Fi
GENERAL	MODEL NO.	CAI13PL3R35F0	CAI19PL3R35F0	CAI24PL3R35F0	CAI12PL5R35W0	CAI20PL5R35W0
	TONNAGE CATEGORY (TR)	1.1	1.5	2.0	1.0	1.5
	MAXIMUM CAPACITY RANGE (WATTS)	4180	5760	6900	4080	5910
	FULL LOAD CAPACITY (100% LOAD RATED) (WATTS)	3630	5050	6300	3500	5230
	HALF LOAD CAPACITY (50%) (WATTS)	1815	2525	3150	1750	2615
	FULL LOAD POWER INPUT* (100% LOAD RATED) (WATTS)	1100	1590	2000	840	1290
	HALF LOAD POWER INPUT*(50% LOAD) (WATTS)	459	615	765	334	475
	ANNUAL POWER CONSUMPTION (KWH)	721.14	999.69	1249.82	536.2	789.6
	LABEL PERIOD	1 ST JULY 2022 - 31 ST DEC 2025	1 ST JULY 2022 - 31 ST DEC 2025	1 ST JULY 2022 - 31 ST DEC 2025	1 ST JULY 2022 - 31 ST DEC 2025	1 ST JULY 2022 - 31 ST DEC 2025
	BEE STAR RATING***	3 STAR	3 STAR	3 STAR	5 STAR	5 STAR
	ISEER VALUE (W/W)	3.9	3.91	3.9	5.05	5.13
	RATED POWER SUPPLY (V-PH-HZ)	230 - 1 - 50	230 - 1 - 50	230 - 1 - 50	230 - 1 - 50	230 - 1 - 50
	RATED AMP (AMP)	4.7	7.0	8.8	3.7	5.8
	NET WEIGHT (KGS) (IDU/ODU)	10 / 21.7	10 / 25.5	12.2 / 28	10 / 26	11 / 27.1
	AIR FLOW RATE (CFM)	500	580	715	500	715
	INDOOR NOISE LEVEL (H/M/L) (DB)	43/41/35	44/41/35	46/44/38	43/41/35	45/42/38
	FAN MOTOR (INDOOR) (NO.OF SPEEDS)	5	5	5	5	5
	WITH CONNECTING KIT PIPE	YES	YES	YES	YES	YES
	VALVE SIZE (INCH)	3/8" X 1/4"	1/2" X 1/4"	5/8" X 1/4"	1/2" X 1/4"	1/2" X 1/4"
	MOISTURE REMOVAL RATE (KG/HR)	1.2	2	2.4	1.2	2
OVERALL SIZE	INDOOR UNIT (HEIGHT) (MM)	328	328	328	328	328
	INDOOR UNIT (WIDTH) (MM)	870	870	990	870	990
	INDOOR UNIT (DEPTH) (MM)	250	250	250	250	250
	OUTDOOR UNIT (HEIGHT) (MM)	540	540	540	540	540
	OUTDOOR UNIT (WIDTH) (MM)	790	790	790	790	790
	OUTDOOR UNIT (DEPTH-WITH GRILL) (MM)	270	270	270	270	270
FILTERS	CONVENTIONAL HD FILTER	NA	NA	NA	NA	NA
	TOP HD FILTER (XPERT)	YES	YES	YES	YES	YES
	PM 2.5 MICRON FILTER(3M BRAND)	NA	NA	NA	NA	NA
	PM 2.5 MICRON FILTER	YES	YES	YES	YES	YES
	AG+ NANO FILTER	NA	NA	NA	NA	NA
	(AVG) ANTIVIRAL GUARD COATED FILTER	NA	NA	NA	NA	NA
FEATURES	HYBRIDJET GRILL	NA	NA	NA	NA	NA
	HYBRIDJET GRILL (2.0)	YES	YES	YES	YES	YES
	REFRIGERANT	R32	R32	R32	R32	R32
	AIR DIRECTION CONTROL	YES	YES	YES	YES	YES
	SECURITY LOCK	YES	YES	YES	YES	YES
	IDU TEMP DISPLAY	HIDDEN DISPLAY	HIDDEN DISPLAY	HIDDEN DISPLAY	HIDDEN DISPLAY	HIDDEN DISPLAY
	REMOTE CONTROL TYPE	LCD REMOTE	LCD REMOTE	LCD REMOTE	LCD REMOTE	LCD REMOTE
	REMOTE BACKLIT	YES	YES	YES	YES	YES
	AUTO OFF TIMER	YES	YES	YES	YES	YES
	AUTO ON TIMER	YES	YES	YES	YES	YES
	SLEEP MODE	YES	YES	YES	YES	YES
	REFRIGERANT LEAKAGE DETECTOR	YES	YES	YES	YES	YES
	LOUVER POSITION MEMORY	YES	YES	YES	YES	YES
	DRY MODE	YES	YES	YES	YES	YES
	AUTO FAN SPEED	YES	YES	YES	YES	YES
	INTELLIGENT CRF ALERT	YES	YES	YES	YES	YES
	AUTO SWING	YES	YES	YES	YES	YES
	AUTO CLEANER	YES	YES	YES	YES	YES
	FOLLOW ME	YES	YES	YES	YES	YES
	AUTO MODE	YES	YES	YES	YES	YES
	AUTO RESTART	YES	YES	YES	YES	YES
	DOUBLE DRAIN (EASY INSTALLATION)	YES	YES	YES	YES	YES
	EASY INSTALLATION - SERVICE SUPPORT BRACKET IDU	YES	YES	YES	YES	YES
	FLEXICOOL (6 IN 1)	YES	YES	YES	YES	YES
	INSTA COOL/TURBO	YES	YES	YES	YES	YES
	WI FI (VER-1.0)	NA	NA	NA	NA	NA
	WI FI (VER-2.0 AI+)	NA	NA	NA	YES	YES
	GOOGLE ACTION (OPTIONAL)	NA	NA	NA	YES	YES
	AMAZON ALEXA (OPTIONAL)	NA	NA	NA	YES	YES
	MY MODE (FAVOURITE MODE)	YES	YES	YES	YES	YES
	TEMP DISPLAY ON/OFF	YES	YES	YES	YES	YES
	SILENT	YES	YES	YES	YES	YES
	4-WAY SWING	YES	YES	YES	YES	YES
	ANTI CORROSION COATING (BLUE)	EVAP-HAIR PIN IN SIDE	EVAP-HAIR PIN IN SIDE	EVAP-HAIR PIN IN SIDE	EVAP-HAIR PIN IN SIDE	EVAP-HAIR PIN IN SIDE
	HYDROPHILIC BLUE COIL	EVAP & COND BOTH	EVAP & COND BOTH	EVAP & COND BOTH	EVAP & COND BOTH	EVAP & COND BOTH
	HIGH AMBIENT WORKING	55°C EVEN AT 195V	55°C EVEN AT 195V	55°C EVEN AT 195V	55°C EVEN AT 195V	55°C EVEN AT 195V
	STABILIZER FREE OPERATION (EVEN @48°C, 135-280V)	YES	YES	YES	YES	YES
	KW / SED DISPLAY	KW DISPLAY	KW DISPLAY	KW DISPLAY	KW DISPLAY	KW DISPLAY
	X-LED VBL (DYNAMIC 2.0)	YES	YES	YES	YES	YES

3 Star H&C Inverter Range - 2025

	PARAMETER (UNIT)	INDUS H&C	INDUS H&C
GENERAL	MODEL NO.	CAI18IN3R33H0	CAI24IN3R34H0
	TONNAGE CATEGORY (TR)	1.5	2.0
	MAXIMUM CAPACITY (WATTS)	5760	6900
	COOLING CAPACITY (FULL LOAD/HALF LOAD) (WATTS)	5100 / 2550	6300 / 3150
	HEATING CAPACITY (FULL LOAD) (WATTS)	5000	6300
	COOLING POWER INPUT (FULL LOAD/HALF LOAD) (WATTS)	1540 / 618	2000 / 765
	HEATING POWER INPUT (FULL LOAD) (WATTS)	1540	2000
	ANNUAL POWER CONSUMPTION-COOLING ONLY (KWH)	988.04	1249.82
	LABEL PERIOD	1 ST JULY 2022 - 31 ST DEC 2025	1 ST JULY 2022 - 31 ST DEC 2025
	BEE STAR RATING***	3 STAR	3 STAR
	ISEER VALUE (W/W)	4	3.9
	RATED POWER SUPPLY (V-PH-HZ)	230 - 1 - 50	230 - 1 - 50
	RATED AMP (AMP)	6.8	8.8
	NET WEIGHT (KGS)(IDU/ODU)	11.5 / 26.5	12.5 / 29
	AIR FLOW RATE (CFM)	685	700
	INDOOR NOISE LEVEL (H/M/L) (DB)	49/46/43	46/44/39
	FAN MOTOR (INDOOR) (NO.OF SPEEDS)	4	4
	WITH CONNECTING KIT PIPE	YES	YES
	VALVE SIZE (INCH)	1/2" X 1/4"	5/8" X 1/4"
	MOISTURE REMOVAL RATE (KG/HR)	2.0	2.4
OVERALL SIZE	INDOOR UNIT (HEIGHT) (MM)	324	315
	INDOOR UNIT (WIDTH) (MM)	965	1045
	INDOOR UNIT (DEPTH) (MM)	234	235
	OUTDOOR UNIT (HEIGHT) (MM)	540	540
	OUTDOOR UNIT (WIDTH) (MM)	790	790
	OUTDOOR UNIT (DEPTH-WITH GRILL) (MM)	280	280
FILTERS	HD FILTER	YES	YES
	PM 2.5 MICRON FILTER(3M BRAND)	NA	NA
	PM 2.5 MICRON FILTER	NA	NA
	AG+ NANO FILTER	NA	NA
	(AVG) ANTIVIRAL GUARD COATED FILTER	YES	YES
FEATURES	HYBRIDJET GRILL	YES	YES
	TURBO MODE	NA	NA
	REFRIGERANT	R32	R32
	AIR DIRECTION CONTROL	YES	YES
	SECURITY LOCK	YES	YES
	IDU TEMP DISPLAY	HIDDEN DISPLAY	HIDDEN DISPLAY
	REMOTE CONTROL TYPE	LCD REMOTE	LCD REMOTE
	REMOTE BACKLIT	YES	YES
	AUTO OFF TIMER	YES	YES
	AUTO ON TIMER	YES	YES
	SLEEP MODE	YES	YES
	REFRIGERANT LEAKAGE DETECTOR	YES	YES
	LOUVER POSITION MEMORY	NA	NA
	DRY MODE	YES	YES
	AUTO FAN SPEED	YES	YES
	INTELLIGENT CRF ALERT	YES	YES
	AUTO SWING	YES	YES
	AUTO CLEANSER	YES	YES
	FOLLOW ME	YES	YES
	AUTO MODE	YES	YES
	AUTO RESTART	YES	YES
	DOUBLE DRAIN (EASY INSTALLATION)	YES	YES
	FLEXICOOL (4 IN 1)	NA	NA
	FLEXICOOL (6 IN 1)	YES	YES
	INSTA COOL	YES	YES
	WI FI (OPTIONAL)	NA	NA
	GOOGLE ACTION (OPTIONAL)	NA	NA
	AMAZON ALEXA (OPTIONAL)	NA	NA
	REFRIGERANT COOLING PCB	NA	NA
	MY MODE (FAVOURITE MODE)	YES	YES
	TEMP DISPLAY ON/OFF	YES	YES
	CLOCK	NA	NA
	ANTI CORROSION COATING (BLUE)	EVAP-HAIR PIN IN SIDE	EVAP-HAIR PIN IN SIDE
	HIGH AMBIENT WORKING	55 DEG	55 DEG
	STABILIZER FREE OPERATION (EVEN @48°C, 135-280V)	YES	YES
	OPERATING RANGE	0 DEG / 55 DEG	0 DEG / 55 DEG
	KW DISPLAY	KW DISPLAY- FLEXICOOL	KW DISPLAY- FLEXICOOL

3 Star Fixed Speed Range - 2025

	PARAMETER (UNIT)	INDUS FX	INDUS FX	INDUS FX	INDUS FX
GENERAL	MODEL NO.	CAS13IN3R35F0	CAS19IN3R35F0	CAS19IN3R35F1	CAS24IN3R35F0
	TONNAGE CATEGORY (TR)	1.0	1.5	1.5	2.0
	RATED CAPACITY* (WATTS)	3600	5200	5200	6050
	NOMINAL COOLING / HEATING POWER INPUT* (WATTS)	940	1350	1350	1570
	ANNUAL POWER (KWH)	727.66	1045.04	1045.04	1215.35
	LABEL PERIOD	1 ST JULY 2022 - 31 ST DEC 2025	1 ST JULY 2022 - 31 ST DEC 2025	1 ST JULY 2022 - 31 ST DEC 2025	1 ST JULY 2022 - 31 ST DEC 2025
	BEE STAR RATING***	3 STAR	3 STAR	3 STAR	3 STAR
	ISEER VALUE (W/W)	3.83	3.85	3.85	3.85
	RATED POWER SUPPLY (V-PH-HZ)	230 - 1 - 50	230 - 1 - 50	230 - 1 - 50	230 - 1 - 50
	RATED AMP (AMP)	4.1	5.9	5.9	6.9
	NET WEIGHT (KGS) (IDU/ODU)	8.3 / 28	11.5 / 33.5	11.5 / 33.5	12.5 / 43.6
	AIR FLOW RATE (CFM)	400	700	700	700
	INDOOR NOISE LEVEL (H/M/L) (DB)	40/38/32	44/42/38	44/42/38	46/44/40
	FAN MOTOR (INDOOR) (NO. OF SPEEDS)	4	4	4	4
	WITH CONNECTING KIT PIPE	YES	YES	YES	YES
	VALVE SIZE (INCH)	1/2" X 1/4"	1/2" X 1/4"	1/2" X 1/4"	5/8" X 1/4"
OVERALL SIZE	INDOOR UNIT (HEIGHT) (MM)	282	324	324	320
	INDOOR UNIT (WIDTH) (MM)	800	965	965	1046
	INDOOR UNIT (DEPTH) (MM)	192	234	234	240
	OUTDOOR UNIT (HEIGHT) (MM)	540	540	540	700
	OUTDOOR UNIT (WIDTH) (MM)	790	790	790	845
	OUTDOOR UNIT (DEPTH-WITH GRILL) (MM)	270	270	270	310
FILTERS	HD FILTER	YES	YES	YES	YES
	PM 2.5 MICRON FILTER (3M BRAND)	NA	NA	NA	NA
	PM 2.5 MICRON FILTER	NA	NA	NA	NA
	AG+ NANO FILTER	NA	NA	NA	NA
	HYPER PROTECTIVE FILTER	NA	NA	NA	NA
	(AVG) ANTIVIRAL GUARD COATED FILTER	YES	YES	YES	YES
FEATURES	HYBRIDJET GRILL	NA	NA	NA	NA
	REFRIGERANT	R32	R32	R32	R32
	AIR DIRECTION CONTROL	YES	YES	YES	YES
	SECURITY LOCK	YES	YES	YES	YES
	IDU TEMP DISPLAY	HIDDEN DISPLAY	HIDDEN DISPLAY	HIDDEN DISPLAY	HIDDEN DISPLAY
	REMOTE CONTROL TYPE	LCD REMOTE	LCD REMOTE	LCD REMOTE	LCD REMOTE
	REMOTE BACKLIT	YES	YES	YES	YES
	AUTO OFF TIMER	YES	YES	YES	YES
	AUTO ON TIMER	YES	YES	YES	YES
	SLEEP MODE	YES	YES	YES	YES
	REFRIGERANT LEAKAGE DETECTOR	YES	YES	YES	YES
	LOUVER POSITION MEMORY	YES	YES	YES	YES
	DRY MODE	YES	YES	YES	YES
	AUTO FAN SPEED	YES	YES	YES	YES
	INTELLIGENT CRF ALERT	YES	YES	YES	YES
	AUTO SWING	YES	YES	YES	YES
	AUTO CLEANSER (SELF CLEAN)	YES	YES	YES	YES
	FOLLOW ME	NA	NA	NA	NA
	AUTO MODE	YES	YES	YES	YES
	AUTO RESTART	YES	YES	YES	YES
	TURBO MODE	YES	YES	YES	YES
	DOUBLE DRAIN (EASY INSTALLATION)	YES	YES	YES	YES
	MANUAL ON/OFF BUTTON	YES	YES	YES	YES
	MY MODE (FAVOURITE MODE)	NA	NA	NA	NA
	HIGH AMBIENT WORKING (AT 230V RATED)	52°C	52°C	52°C	52°C
	IDU DISPLAY ON/OFF	YES	YES	YES	YES
	SUMMER CHILL	NA	NA	NA	NA
	SILENT	NA	NA	NA	NA
	4-WAY SWING	NA	NA	NA	NA
	ANTI CORROSION COATING (BLUE)	EVAP-HAIR PIN IN SIDE	EVAP-HAIR PIN IN SIDE	EVAP-HAIR PIN IN SIDE	EVAP-HAIR PIN IN SIDE

3 & 5 Star WRAC Inverter Range - 2025

	PARAMETER (UNIT)	ESTRELLA FXI	ESTRELLA Fxi (E)	ESTRELLA FXI	ESTRELLA PLATINUM-X FXI
GENERAL	MODEL NO.	CIW19EC5R35F0	CIW19EC5R35F1	CIW19EC3R35F0	CIW19EP5R35F0
	TONNAGE CATEGORY (TR)	1.5	1.5	1.5	1.5
	LABEL PERIOD	1 ST JULY 2022 - 31 ST DEC 2025	1 ST JULY 2022 - 31 ST DEC 2025	1 ST JULY 2022 - 31 ST DEC 2025	1 ST JULY 2022 - 31 ST DEC 2025
	BEE STAR RATING***	5 STAR	5 STAR	3 STAR	5 STAR
	FULL LOAD CAPACITY	5150	5070	5000	5050
	HALF LOAD CAPACITY	2575	2535	2500	2525
	FULL LOAD POWER INPUT*	1640	1620	1760	1630
	HALF LOAD POWER INPUT*	730	725	800	708
	ANNUAL POWER CONSUMPTION (KWH)	1114.62	1104.37	1210.35	1092.74
	ISEER VALUE (W/W)	3.58	3.55	3.2	3.58
	RATED POWER SUPPLY (VOLTS/PH/HZ)	230 - 1 - 50	230 - 1 - 50	230 - 1 - 50	230 - 1 - 50
	RATED CURRENT (AMP)	7.6	7.1	8	8
	AIR FLOW RATE (CFM)	480	450	470	450
	NOISE LEVEL (H/M/L)	56/53/50	56/53/50	56/53/50	53/51/49
OVERALL SIZE	OVERALL HEIGHT (MM)	430	430	430	430
	OVERALL WIDTH (MM)	660	660	660	660
	OVERALL DEPTH (MM)	770	700	700	660
	NET WEIGHT (KG)	56	45	46	41.5
	FAN MOTOR (# OF SPEEDS)	3	3	3	3
FILTERS	ELECTROSTATIC FILTER	NA	NA	NA	NA
	ZEOLITE FILTER	NA	NA	NA	NA
	CHARCOAL / ACTIVE CARBON FILTER	NA	NA	NA	NA
	VITAMIN C FILTER	NA	NA	NA	NA
FEATURES	DUST FILTER	YES	YES	YES	YES
	AIR DIRECTION	2 WAY	2 WAY	2 WAY	4 WAY
	WINDOW TYPE	CONVENTIONAL	CONVENTIONAL	CONVENTIONAL	TOP THROW
	CONTROL TYPE	LCD REMOTE	LCD REMOTE	LCD REMOTE	LCD REMOTE
	ROOM TEMPERATURE DISPLAY	YES	YES	YES	YES
	AUTO OFF TIMER	YES	YES	YES	YES
	AUTO ON TIMER	YES	YES	YES	YES
	SLEEP MODE	YES	YES	YES	YES
	DRY MODE	YES	YES	YES	YES
	TURBO MODE	YES	YES	YES	YES
	AUTO FAN SPEED	YES	YES	YES	YES
	ENERGY SAVER MODE	YES	YES	YES	YES
	EXHAUST COMMAND	NA	NA	NA	NA
	SMART TIME GUARD	NA	NA	NA	NA
	AUTO SWING	YES	YES	YES	YES
	AUTO RESTART	YES	YES	YES	YES
	REFRIGERANT	R32	R32	R32	R32
	FLEXICOOL (50% , 75% , 100% POWER)	NA	NA	NA	NA
	WI FI (OPTIONAL)	NA	NA	NA	NA
	GOOGLE ACTION (OPTIONAL)	NA	NA	NA	NA
	AMAZON ALEXA (OPTIONAL)	NA	NA	NA	NA
	HIGH AMBIENT WORKING	52°C	52°C	52°C	52°C
	STABILIZER FREE OPERATION (EVEN @48°C	YES	YES	YES	YES
	ANTI CORROSION COATING (BLUE)	EVAP-HAIR PIN IN SIDE	EVAP-HAIR PIN IN SIDE	EVAP-HAIR PIN IN SIDE	EVAP-HAIR PIN IN SIDE

3 Star WRAC Fixed Speed Range - 2025

	PARAMETER (UNIT)	ESTRELLA Fx	ESTRELLA Fx	ESTRELLA Fx
GENERAL	MODEL NO.	CAW12EC3R34F0	CAW19EC3R35F0	CAW24EC3R32F0
	TONNAGE CATEGORY (TR)	1.0	1.5	2.0
	LABEL PERIOD	1 ST JULY 2022 - 31 ST DEC 2025	1 ST JULY 2022 - 31 ST DEC 2025	1 ST JULY 2022 - 31 ST DEC 2025
	BEE STAR RATING***	3 STAR	3 STAR	3 STAR
	RATED CAPACITY* (WATTS)	3300	5000	6000
	NOMINAL POWER INPUT* (WATTS)	1050	1558	1875
	ANNUAL POWER CONSUMPTION (KWH)	812.81	1206.06	1451.45
	ISEER VALUE (W/W)	3.14	3.21	3.2
	RATED POWER SUPPLY (VOLTS/PH/HZ)	230 - 1 - 50	230 - 1 - 50	230 - 1 - 50
	NET WEIGHT (KGS)	42	54	60.5
PHYSICAL ASPECTS	OVERALL HEIGHT (MM)	375	470	470
	OVERALL WIDTH (MM)	560	660	660
	OVERALL DEPTH (MM)	620	700	770
	AIR FLOW RATE (CFM)	300	500	650
	NOISE LEVEL (H/M/L) (DB)(A)	H-48/ L- 46	56/54/52	60/59/58
	FAN MOTOR (# OF SPEEDS)	3	3	3
FILTERS	ELECTROSTATIC FILTER	NA	NA	NA
	ZEOLITE FILTER	NA	NA	NA
	CHARCOAL / ACTIVE CARBON FILTER	NA	NA	NA
	VITAMIN C FILTER	NA	NA	NA
	DUST FILTER	YES	YES	YES
FEATURES	AIR DIRECTION	2 WAY	2 WAY	2 WAY
	CONTROL TYPE	NON LCD REMOTE	NON LCD REMOTE	NON LCD REMOTE
	TEMPERATURE DISPLAY - ON PANEL	YES	YES	YES
	AUTO OFF TIMER	YES	YES	YES
	AUTO ON TIMER	YES	YES	YES
	SLEEP MODE	YES	YES	YES
	DRY MODE	YES	YES	YES
	TURBO MODE	YES	YES	YES
	AUTO FAN SPEED	YES	YES	YES
	ENERGY SAVER MODE	YES	YES	YES
	EXHAUST COMMAND	NA	NA	NA
	SMART TIME GUARD	NA	NA	NA
	AUTO SWING	YES	YES	YES
	AUTO RESTART	YES	YES	YES
	HIGH AMBIENT WORKING (AT 230V RATED)	50°C	50°C	50°C
	REFRIGERANT	R32	R32	R32
	ANTI CORROSION COATING (BLUE)	EVAP-HAIR PIN IN SIDE	EVAP-HAIR PIN IN SIDE	EVAP-HAIR PIN IN SIDE



REASONS TO BUY CARRIER ROOM AIR CONDITIONERS



Top
filter



3D cooling



Supported with



Smart Energy
Display



Anti-Viral
Guard*



Carrier
Smart Connect



Insta
Kool



High Ambient
Working (At 55° C)



Hidden
Display



Auto
Swing



Intelligent
CRF Alert



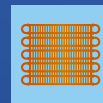
Refrigerant
Leakage Detector



Stabilizer Free
Even At 48 Deg*



Hydro
Blue Coating*



Aqua Clear
Protection



Auto
Cleanser



34 Feet
Air Flow*



Air Directional
Control



Follow Me



My Mode



100%
Copper



Equipped With
5 Safety Sensors



Error Code
Indicator



**INDIA
DESIGN
MARK**
awarded in 2024



2025 Non-Wi-Fi Inverter models are Wi-Fi Ready, and with the addition of a Wi-Fi module (at an additional component cost), these can be converted to Wi-Fi models. For updates, please contact our customer care. 18001033333

*Terms and Conditions apply. Product specifications, features, and offers are subject to change without prior notice. For detailed terms and conditions & validity period, please visit www.carriermideaindia.com
Xtreme Lumo Registration Code 382679-001 | Xcel Lumo Registration Code 398592-001.

**Rest
Assured**

NOTES

[illegible]

Images shown are for reference only, actual product may vary.
For private circulation only. This is not an advertisement.

Corporate Office:

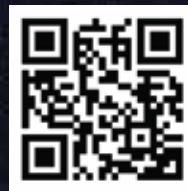
CARRIER MIDEA INDIA PRIVATE LIMITED

1st Floor, Pearl Tower, Plot No - 51, Sector - 32, Gurgaon, Haryana - 122001

Factory:


CARRIER MIDEA INDIA


Plot No. A-5, SUPA-PARNER Industrial Area, Ahmednagar, Maharashtra, 414301




Scan to access
CMI WhatsApp Bot

CARRIER CARE - 1800 103 3333

 <https://www.facebook.com/CarrierMideaAc>

 <https://www.instagram.com/carriermideaIndia>

 <https://www.twitter.com/CarrierMideaInd>

Disclaimer: As a continuing policy of product innovation at Carrier, the design and specifications are subject to change without prior notice.

The visuals of the products in the brochure are representative only, actual products might differ from the ones shown.

'Products mentioned in this brochure comply with RoHS regulations as per E-waste (Management & Handling) Rules, 2011 and should not be mixed with general household waste at the end of their useful life'. For more details kindly visit our website: www.carriermideaIndia.com